

**Muscatine County, Iowa**

Horizontal Datum: **NAD 83(2011)** - Vertical Datum: **NAVD 1988**  
Iowa State Plane South Zone (1402)  
Iowa Regional Coordinate System Zone 14 Burlington  
US Survey Feet  
**2014**

Point Name: **143**

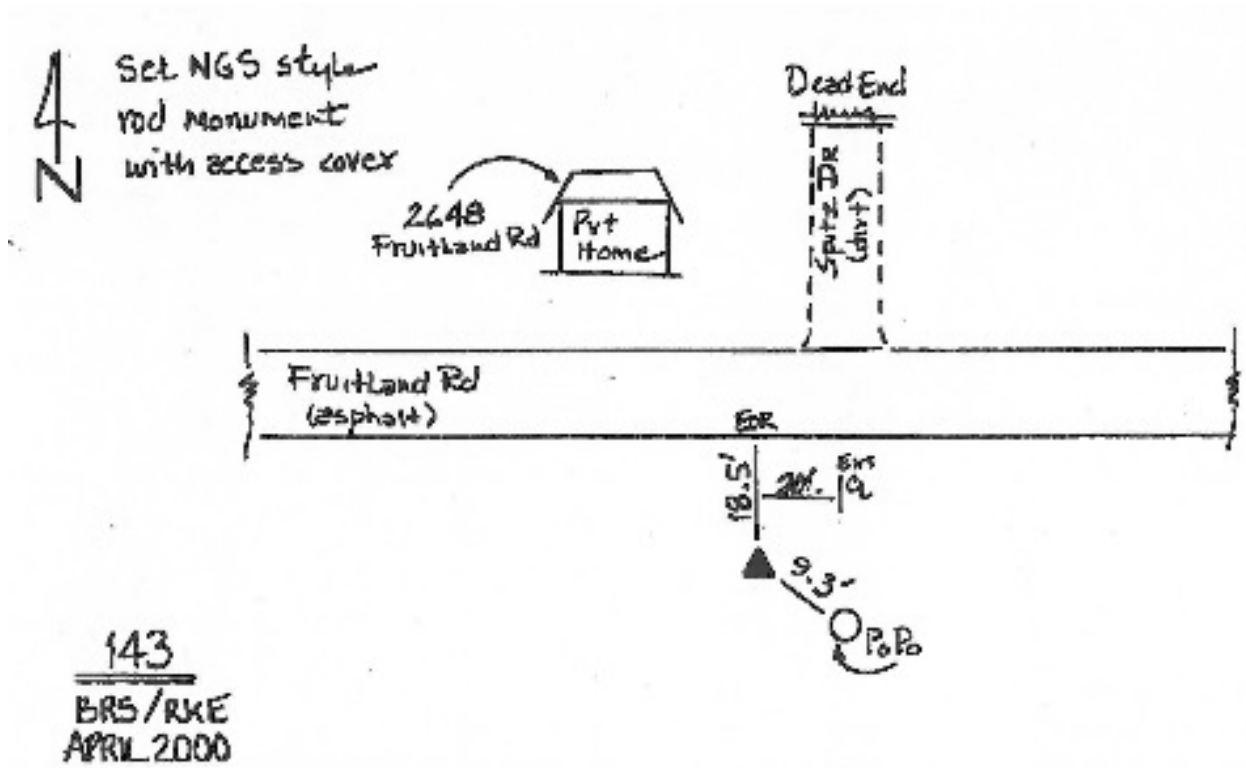
**Designation:** Muscatine Co. GPS Control Pt 2000-143 (Set by ASI in 2000)

NAD 83(NA2011) Latitude: **N41°21'21.35021"** Longitude: **W91°07'05.59871"**  
NAVD 88 Ortho Height: **548.920sft** Ellip. Ht: **440.777sft** **Geoid12A**

Iowa South Zone (1402) Northing: **502962.761sft** Easting: **2294204.708sft**  
Mapping Angle: **1°34'08"** Combination Scale Factor: **0.999930988**

IaRCS Zone 14 Northing: **6602966.066sft** Easting: **24536179.453sft**  
Mapping Angle: **0°05'13"** Combination Scale Factor: **0.9999984627**

**Monument Type:** 5/8" dia. driven aluminum rod with a 2-1/2" dia. aluminum cap and permanent magnet encased in a 5" dia. PVC pipe with an aluminum access cover.



*This document was prepared by DCI on November 10, 2014 for use by Muscatine County, Iowa*