

Muscatine County, Iowa

Horizontal Datum: **NAD 83(2011)** - Vertical Datum: **NAVD 1988**
Iowa State Plane South Zone (1402)
Iowa Regional Coordinate System Zone 14 Burlington
US Survey Feet
2014

Point Name: **144**

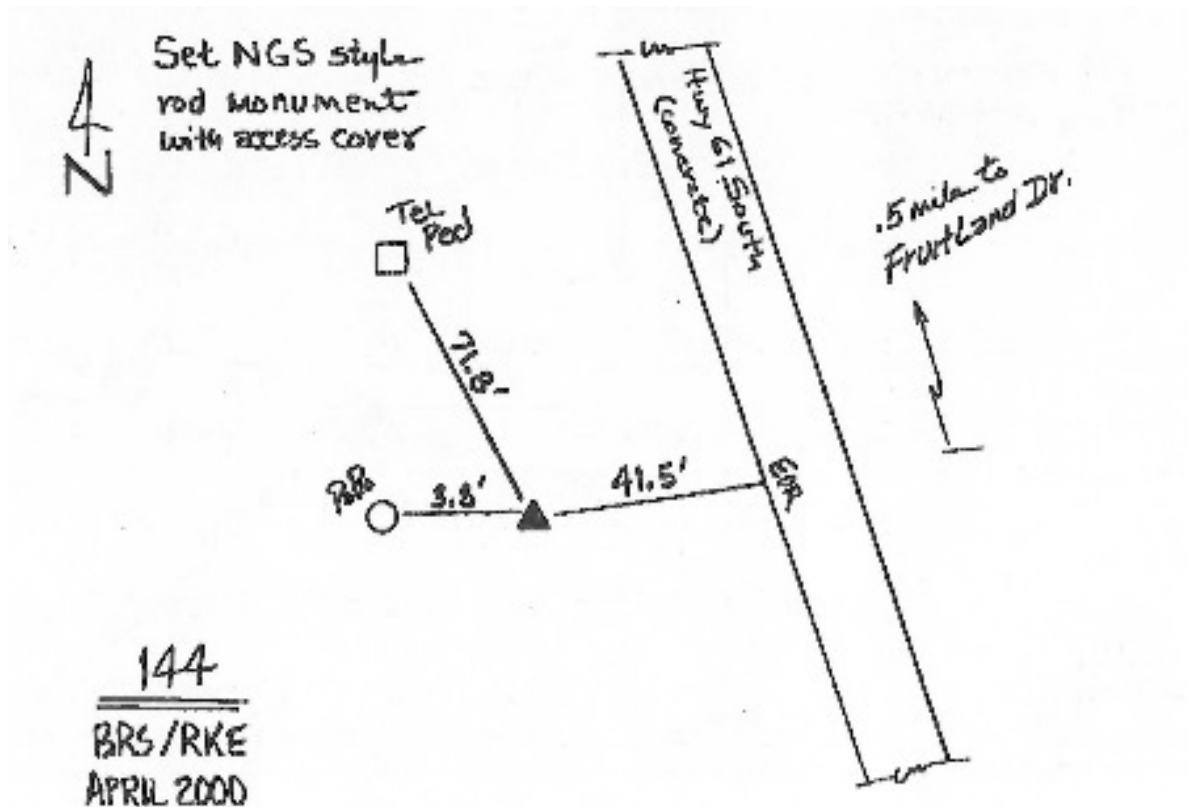
Designation: Muscatine Co. GPS Control Pt 2000-144 (Set by ASI in 2000)

NAD 83(NA2011) Latitude: **N41°21'02.64319"** Longitude: **W91°09'39.20060"**
NAVD 88 Ortho Height: **535.730sft** Ellip. Ht: **427.602sft** **Geoid12A**

Iowa South Zone (1402) Northing: **500752.291sft** Easting: **2282546.503sft**
Mapping Angle: **1°32'27"** Combination Scale Factor: **0.999931376**

IaRCS Zone 14 Northing: **6601057.692sft** Easting: **24524467.196sft**
Mapping Angle: **0°03'32"** Combination Scale Factor: **0.9999982796**

Monument Type: 5/8" dia. driven aluminum rod with a 2-1/2" dia. aluminum cap and permanent magnet encased in a 5" dia. PVC pipe with an aluminum access cover.



This document was prepared by DCI on November 10, 2014 for use by Muscatine County, Iowa