

Muscatine County, Iowa

Horizontal Datum: **NAD 83(2011)** - Vertical Datum: **NAVD 1988**

Iowa State Plane South Zone (1402)

Iowa Regional Coordinate System Zone 14 Burlington

US Survey Feet

2014

Point Name: **147**

Designation: Muscatine Co. GPS Control Pt 2000-147 (Set by ASI in 2000)

NAD 83(NA2011) Latitude: **N41°20'34.58123"** Longitude: **W91°15'13.67642"**

NAVD 88 Ortho Height: **685.380sft** Ellip. Ht: **577.347sft** **Geoid12A**

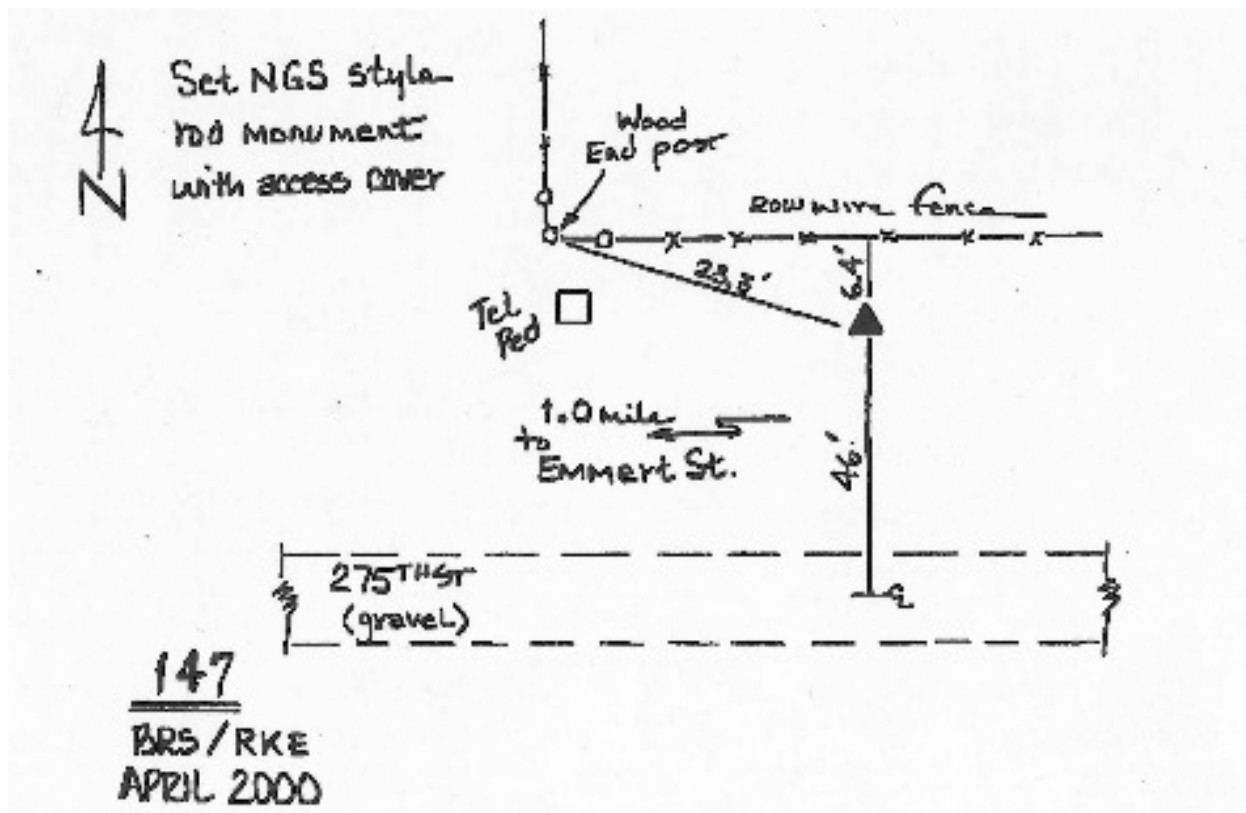
Iowa South Zone (1402) Northing: **497240.839sft** Easting: **2257120.099sft**

Mapping Angle: **1°28'46"** Combination Scale Factor: **0.999923886**

IaRCS Zone 14 Northing: **6598204.823sft** Easting: **24498956.782sft**

Mapping Angle: **-0°00'09"** Combination Scale Factor: **0.9999904513**

Monument Type: 5/8" dia. driven aluminum rod with a 2-1/2" dia. aluminum cap and permanent magnet encased in a 5" dia. PVC pipe with an aluminum access cover.



This document was prepared by DCI on November 10, 2014 for use by Muscatine County, Iowa