

**Muscatine County, Iowa**

Horizontal Datum: **NAD 83(2011)** - Vertical Datum: **NAVD 1988**

Iowa State Plane South Zone (1402)

Iowa Regional Coordinate System Zone 14 Burlington

US Survey Feet

**2014**

Point Name: **150 (Not Measured)**

**Designation:** ~~Muscatine Co. GPS Control Pt 2000-150 (Set by ASI in 2000)~~

NAD 83(NA2011) Latitude: ~~**N41°20'01.620939"**~~ Longitude: ~~**W91°04'52.508908"**~~

NAVD 88 Ortho Height: ~~**596.88sft**~~ Ellip. Ht: ~~**489.05sft**~~ ~~**Geoid96C**~~

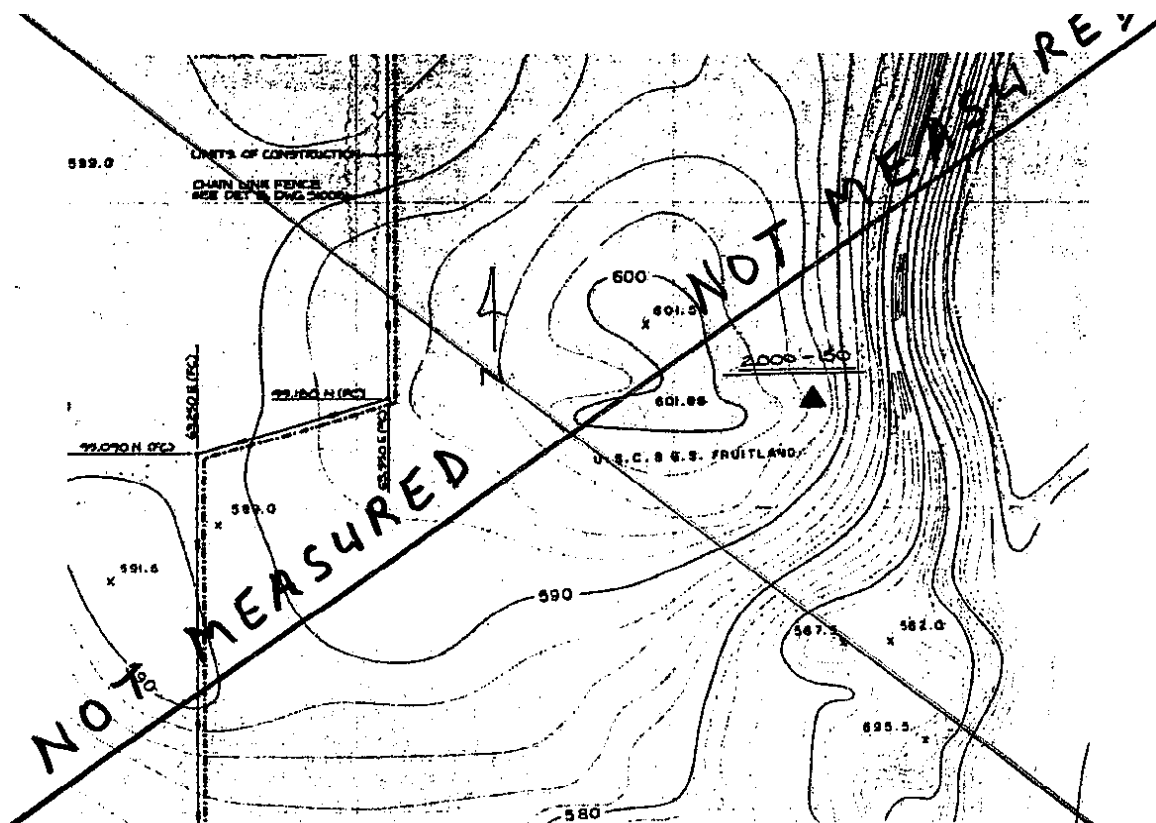
Iowa South Zone (1402) Northing: ~~**495176.56sft**~~ Easting: ~~**2304574.41sft**~~

Mapping Angle: ~~**1°35'36"**~~ Combination Scale Factor: ~~**0.99992766**~~

IaRCS Zone 14 Northing: ~~**N/Asft**~~ Easting: ~~**N/Asft**~~

Mapping Angle: ~~**N/A**~~ Combination Scale Factor: ~~**N/A**~~

**Monument Type:** ~~5/8" dia. driven aluminum rod with a 2-1/2" dia. aluminum cap and permanent magnet encased in a 5" dia. PVC pipe with an aluminum access cover.~~



*This document was prepared by DCI on November 10, 2014 for use by Muscatine County, Iowa*