

Muscatine County, Iowa

Horizontal Datum: **NAD 83(2011)** - Vertical Datum: **NAVD 1988**

Iowa State Plane South Zone (1402)

Iowa Regional Coordinate System Zone 14 Burlington

US Survey Feet

2014

Point Name: **151 (Replaces 105)**

Designation: 151 (Set by DCI in 2014)

NAD 83(NA2011) Latitude: **N41°34'14.29143"** Longitude: **W90°47'03.13002"**

NAVD 88 Ortho Height: **729.662sft** Ellip. Ht: **622.067sft** **Geoid12A**

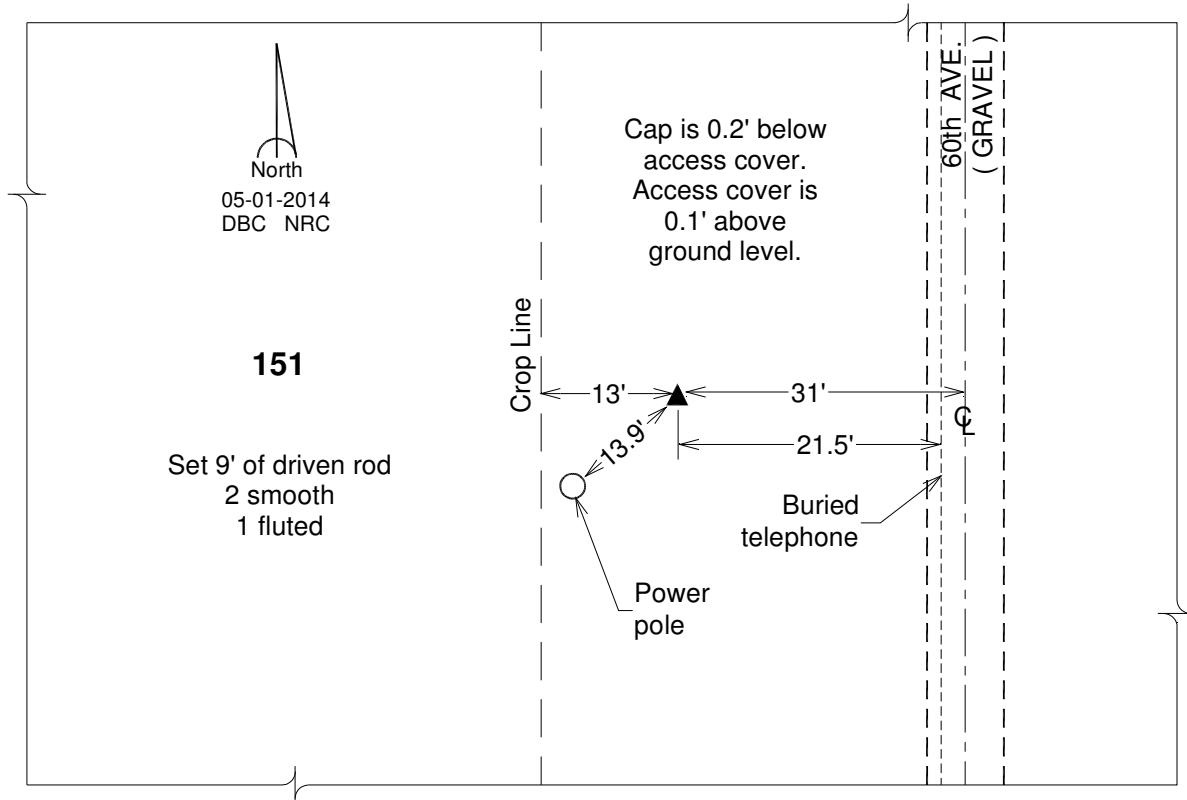
Iowa South Zone (1402) Northing: **583842.299sft** Easting: **2383421.427sft**

Mapping Angle: **1°47'20"** Combination Scale Factor: **0.999939471**

IaRCS Zone 14 Northing: **6681518.051sft** Easting: **24627462.814sft**

Mapping Angle: **0°18'33"** Combination Scale Factor: **1.0000068827**

Monument Type: Berntsen Top Security Rod Monument with a 2-1/2" dia. domed survey cap and permanent magnet encased in a white PVC pipe with a NGS style aluminum access cover.



This document was prepared by DCI on November 10, 2014 for use by Muscatine County, Iowa