

**Muscatine County, Iowa**

Horizontal Datum: **NAD 83(2011)** - Vertical Datum: **NAVD 1988**

Iowa State Plane South Zone (1402)

Iowa Regional Coordinate System Zone 14 Burlington

US Survey Feet

**2014**

Point Name: **300**

**Designation:** City of Muscatine GPS Control Pt 2000-300 (Set by ASI in 2000)

NAD 83(NA2011) Latitude: **N41°27'49.61120"** Longitude: **W91°02'07.76972"**

NAVD 88 Ortho Height: **640.270sft** Ellip. Ht: **532.453sft** **Geoid12A**

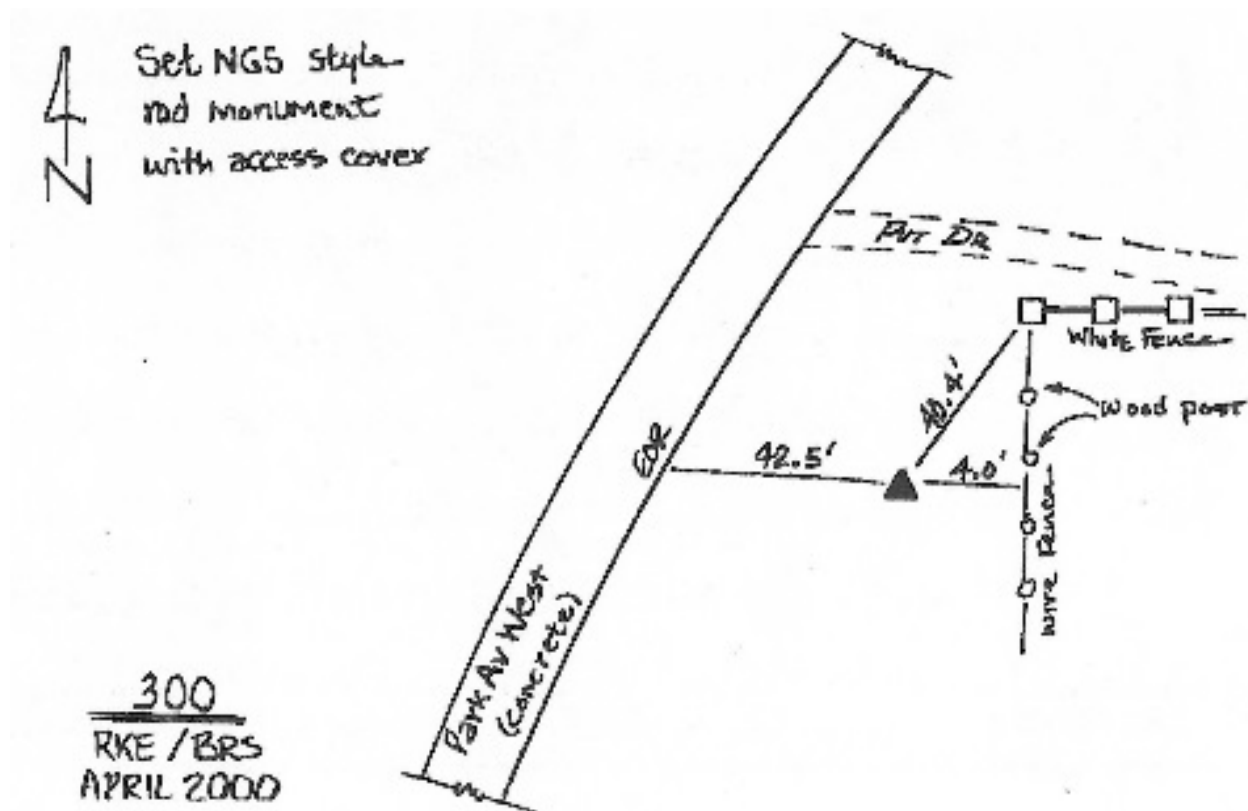
Iowa South Zone (1402) Northing: **542875.832sft** Easting: **2315794.605sft**

Mapping Angle: **1°37'24"** Combination Scale Factor: **0.999933465**

IaRCS Zone 14 Northing: **6642310.145sft** Easting: **24558795.597sft**

Mapping Angle: **0°08'31"** Combination Scale Factor: **0.9999965430**

**Monument Type:** 5/8" dia. driven aluminum rod with a 2-1/2" dia. aluminum cap and permanent magnet encased in a 5" dia. PVC pipe with an aluminum access cover.



*This document was prepared by DCI on November 10, 2014 for use by Muscatine County, Iowa*