

**Muscatine County, Iowa**

Horizontal Datum: **NAD 83(2011)** - Vertical Datum: **NAVD 1988**

Iowa State Plane South Zone (1402)

Iowa Regional Coordinate System Zone 14 Burlington

US Survey Feet

**2014**

Point Name: **303**

**Designation:** City of Muscatine GPS Control Pt 2000-303 (Set by ASI in 2000)

NAD 83(NA2011) Latitude: **N41°26'54.91725"** Longitude: **W91°04'14.76880"**

NAVD 88 Ortho Height: **681.760sft** Ellip. Ht: **573.900sft** **Geoid12A**

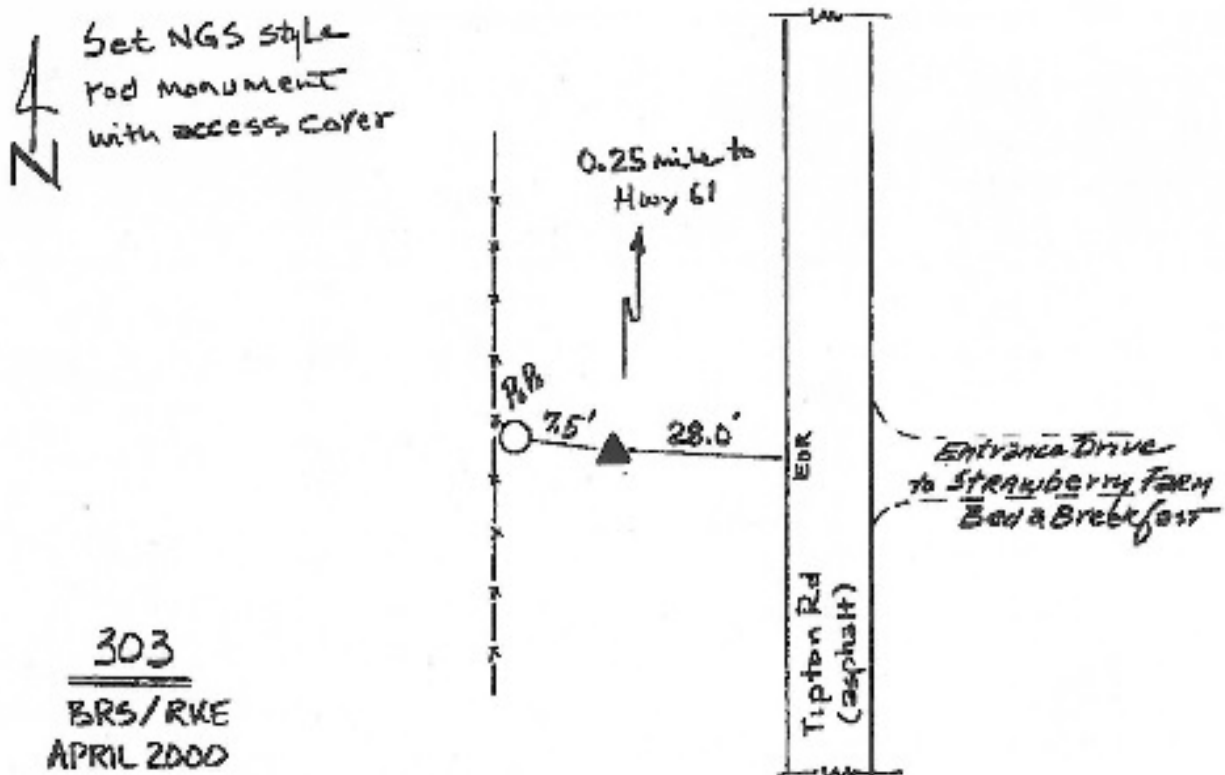
Iowa South Zone (1402) Northing: **537070.356sft** Easting: **2306284.205sft**

Mapping Angle: **1°36'00"** Combination Scale Factor: **0.999930308**

IaRCS Zone 14 Northing: **6636752.129sft** Easting: **24549137.679sft**

Mapping Angle: **0°07'07"** Combination Scale Factor: **0.9999933740**

**Monument Type:** 5/8" dia. driven aluminum rod with a 2-1/2" dia. aluminum cap and permanent magnet encased in a 5" dia. PVC pipe with an aluminum access cover.



*This document was prepared by DCI on November 10, 2014 for use by Muscatine County, Iowa*