

Muscatine County, Iowa

Horizontal Datum: **NAD 83(2011)** - Vertical Datum: **NAVD 1988**

Iowa State Plane South Zone (1402)

Iowa Regional Coordinate System Zone 14 Burlington

US Survey Feet

2014

Point Name: **304**

Designation: City of Muscatine GPS Control Pt 2000-304 (Set by ASI in 2000)

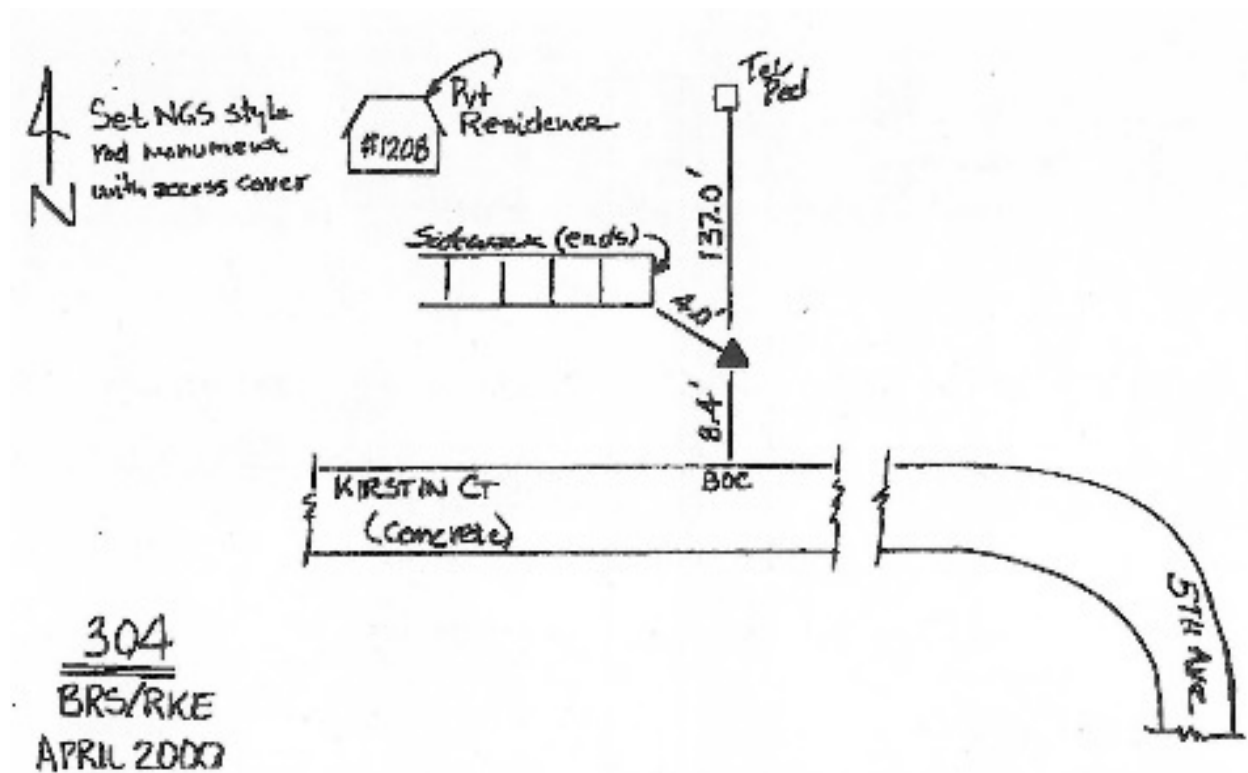
NAD 83(NA2011) Latitude: **N41°26'58.54505"** Longitude: **W91°02'44.38400"**

NAVD 88 Ortho Height: **644.960sft** Ellip. Ht: **537.094sft** **Geoid12A**

Iowa South Zone (1402) Northing: **537630.576sft** Easting: **2313153.986sft**
Mapping Angle: **1°37'00"** Combination Scale Factor: **0.999932140**

IaRCS Zone 14 Northing: **6637134.579sft** Easting: **24556020.085sft**
Mapping Angle: **0°08'07"** Combination Scale Factor: **0.9999959574**

Monument Type: 5/8" dia. driven aluminum rod with a 2-1/2" dia. aluminum cap and permanent magnet encased in a 5" dia. PVC pipe with an aluminum access cover.



This document was prepared by DCI on November 10, 2014 for use by Muscatine County, Iowa