

Muscatine County, Iowa

Horizontal Datum: **NAD 83(2011)** - Vertical Datum: **NAVD 1988**

Iowa State Plane South Zone (1402)

Iowa Regional Coordinate System Zone 14 Burlington

US Survey Feet

2014

Point Name: **308 (Destroyed)**

Designation: ~~City of Muscatine GPS Control Pt 2000-308 (Set by ASI in 2000)~~

NAD 83(NA2011) Latitude: ~~**N41°26'09.700178"**~~ Longitude: ~~**W91°04'20.184168"**~~

NAVD 88 Ortho Height: ~~**712.1sft**~~ Ellip. Ht: ~~**604.58sft**~~ **Geoid96C**

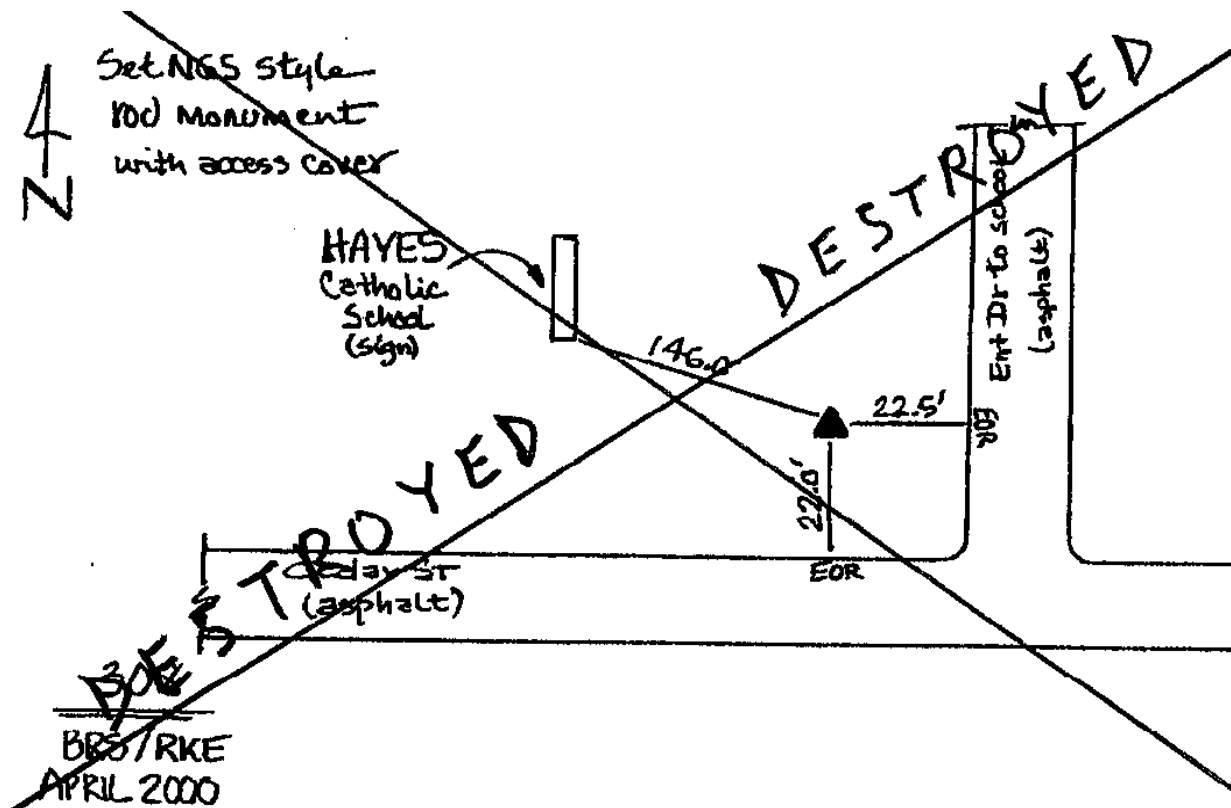
Iowa South Zone (1402) Northing: ~~**532484.13sft**~~ Easting: ~~**2305999.7sft**~~

Mapping Angle: ~~**1°35'57"**~~ Combination Scale Factor: ~~**0.99992785**~~

IaRCS Zone 14 Northing: ~~**N/Asft**~~ Easting: ~~**N/Asft**~~

Mapping Angle: ~~**N/A**~~ Combination Scale Factor: ~~**N/A**~~

Monument Type: ~~5/8" dia. driven aluminum rod with a 2-1/2" dia. aluminum cap and permanent magnet encased in a 5" dia. PVC pipe with an aluminum access cover.~~



This document was prepared by DCI on November 10, 2014 for use by Muscatine County, Iowa