

Muscatine County, Iowa

Horizontal Datum: **NAD 83(2011)** - Vertical Datum: **NAVD 1988**

Iowa State Plane South Zone (1402)

Iowa Regional Coordinate System Zone 14 Burlington

US Survey Feet

2014

Point Name: **315**

Designation: City of Muscatine GPS Control Pt 2000-315 (Set by ASI in 2000)

NAD 83(NA2011) Latitude: **N41°25'16.28211"** Longitude: **W91°03'33.22262"**

NAVD 88 Ortho Height: **653.810sft** Ellip. Ht: **545.852sft** **Geoid12A**

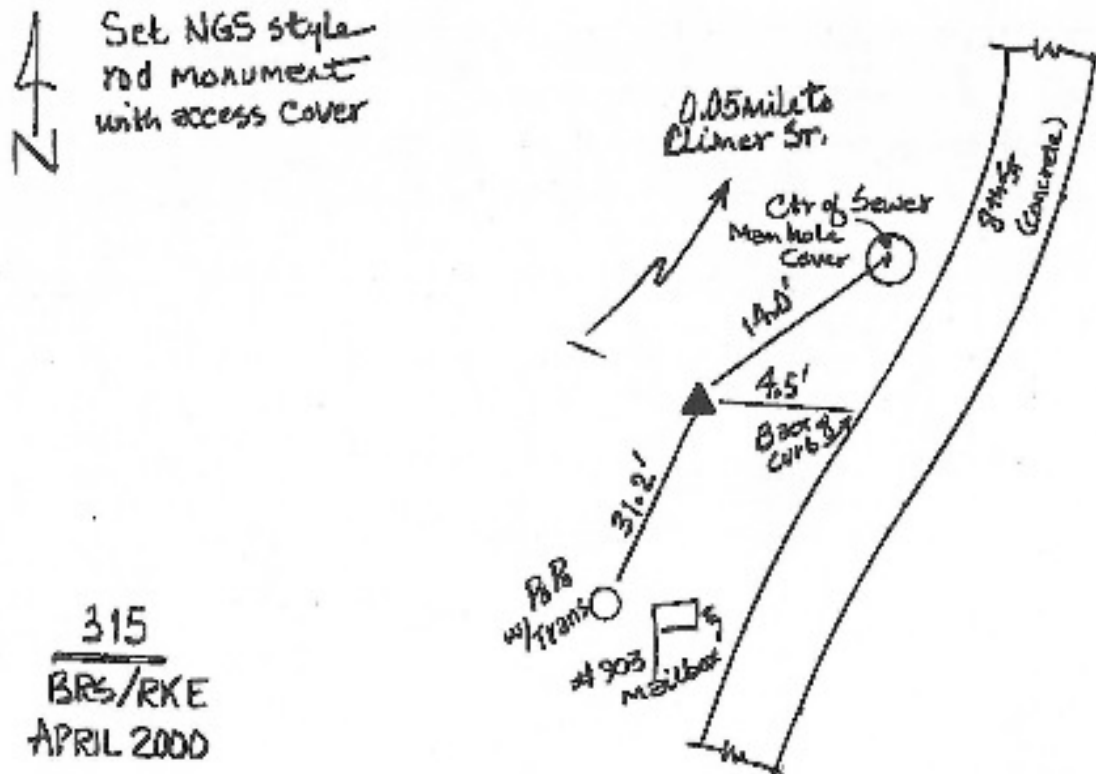
Iowa South Zone (1402) Northing: **527179.836sft** Easting: **2309726.819sft**

Mapping Angle: **1°36'28"** Combination Scale Factor: **0.999929697**

IaRCS Zone 14 Northing: **6626775.268sft** Easting: **24552323.635sft**

Mapping Angle: **0°07'34"** Combination Scale Factor: **0.9999950817**

Monument Type: 5/8" dia. driven aluminum rod with a 2-1/2" dia. aluminum cap and permanent magnet encased in a 5" dia. PVC pipe with an aluminum access cover.



This document was prepared by DCI on November 10, 2014 for use by Muscatine County, Iowa