

Muscatine County, Iowa

Horizontal Datum: **NAD 83(2011)** - Vertical Datum: **NAVD 1988**

Iowa State Plane South Zone (1402)

Iowa Regional Coordinate System Zone 14 Burlington

US Survey Feet

2014

Point Name: **317**

Designation: City of Muscatine GPS Control Pt 2000-317 (Set by ASI in 2000)

NAD 83(NA2011) Latitude: **N41°24'27.60611"** Longitude: **W91°05'15.06687"**

NAVD 88 Ortho Height: **540.456sft** Ellip. Ht: **432.444sft** **Geoid12A**

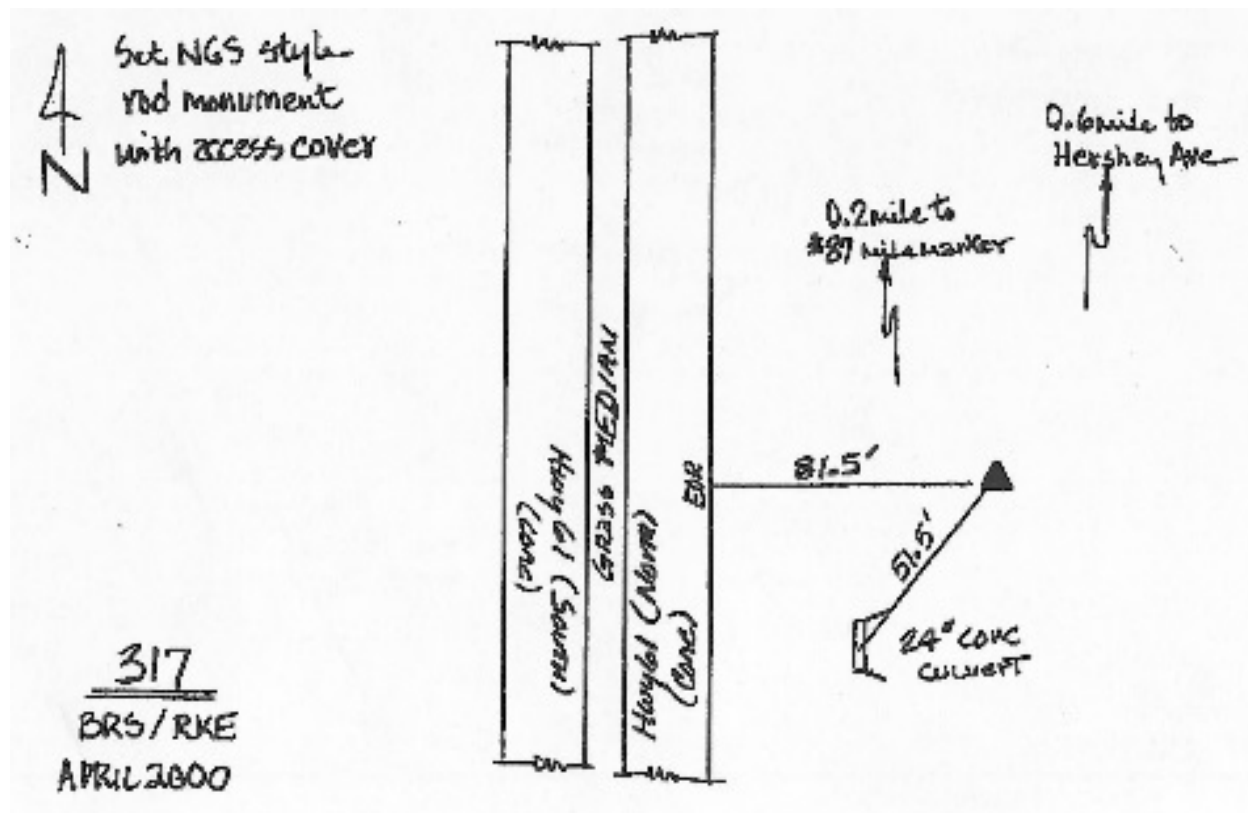
Iowa South Zone (1402) Northing: **522038.764sft** Easting: **2302107.717sft**

Mapping Angle: **1°35'21"** Combination Scale Factor: **0.999934230**

IaRCS Zone 14 Northing: **6621832.587sft** Easting: **24544573.647sft**

Mapping Angle: **0°06'27"** Combination Scale Factor: **0.9999996350**

Monument Type: 5/8" dia. driven aluminum rod with a 2-1/2" dia. aluminum cap and permanent magnet encased in a 5" dia. PVC pipe with an aluminum access cover.



This document was prepared by DCI on November 10, 2014 for use by Muscatine County, Iowa