

**Muscatine County, Iowa**

Horizontal Datum: **NAD 83(2011)** - Vertical Datum: **NAVD 1988**  
Iowa State Plane South Zone (1402)  
Iowa Regional Coordinate System Zone 14 Burlington  
US Survey Feet  
**2014**

Point Name: **318**

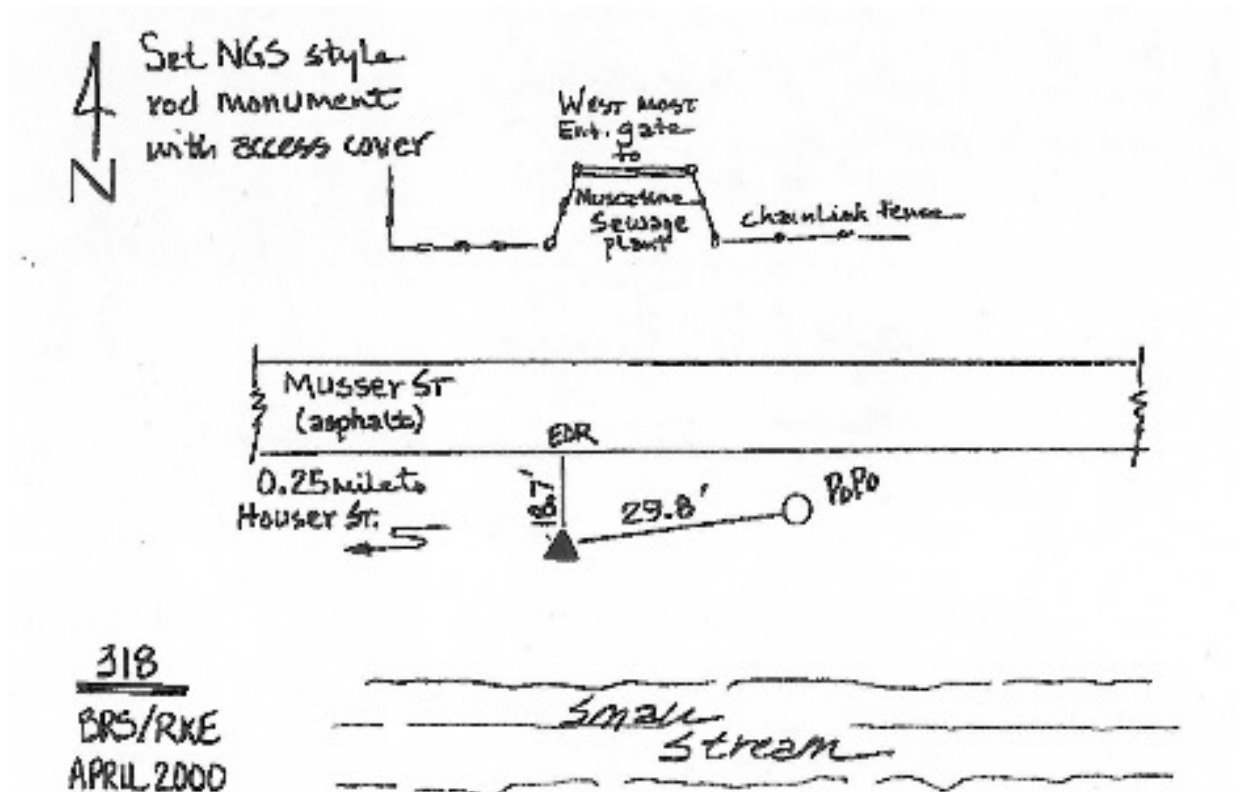
**Designation:** City of Muscatine GPS Control Pt 2000-318 (Set by ASI in 2000)

NAD 83(NA2011) Latitude: **N41°24'25.35430"** Longitude: **W91°04'29.64564"**  
NAVD 88 Ortho Height: **539.115sft** Ellip. Ht: **431.105sft** **Geoid12A**

Iowa South Zone (1402) Northing: **521907.175sft** Easting: **2305573.747sft**  
Mapping Angle: **1°35'51"** Combination Scale Factor: **0.999934255**

IaRCS Zone 14 Northing: **6621611.410sft** Easting: **24548035.343sft**  
Mapping Angle: **0°06'57"** Combination Scale Factor: **1.0000000653**

**Monument Type:** 5/8" dia. driven aluminum rod with a 2-1/2" dia. aluminum cap and permanent magnet encased in a 5" dia. PVC pipe with an aluminum access cover.



*This document was prepared by DCI on November 10, 2014 for use by Muscatine County, Iowa*