

Muscatine County, Iowa

Horizontal Datum: **NAD 83(2011)** - Vertical Datum: **NAVD 1988**
Iowa State Plane South Zone (1402)
Iowa Regional Coordinate System Zone 14 Burlington
US Survey Feet
2014

Point Name: **323**

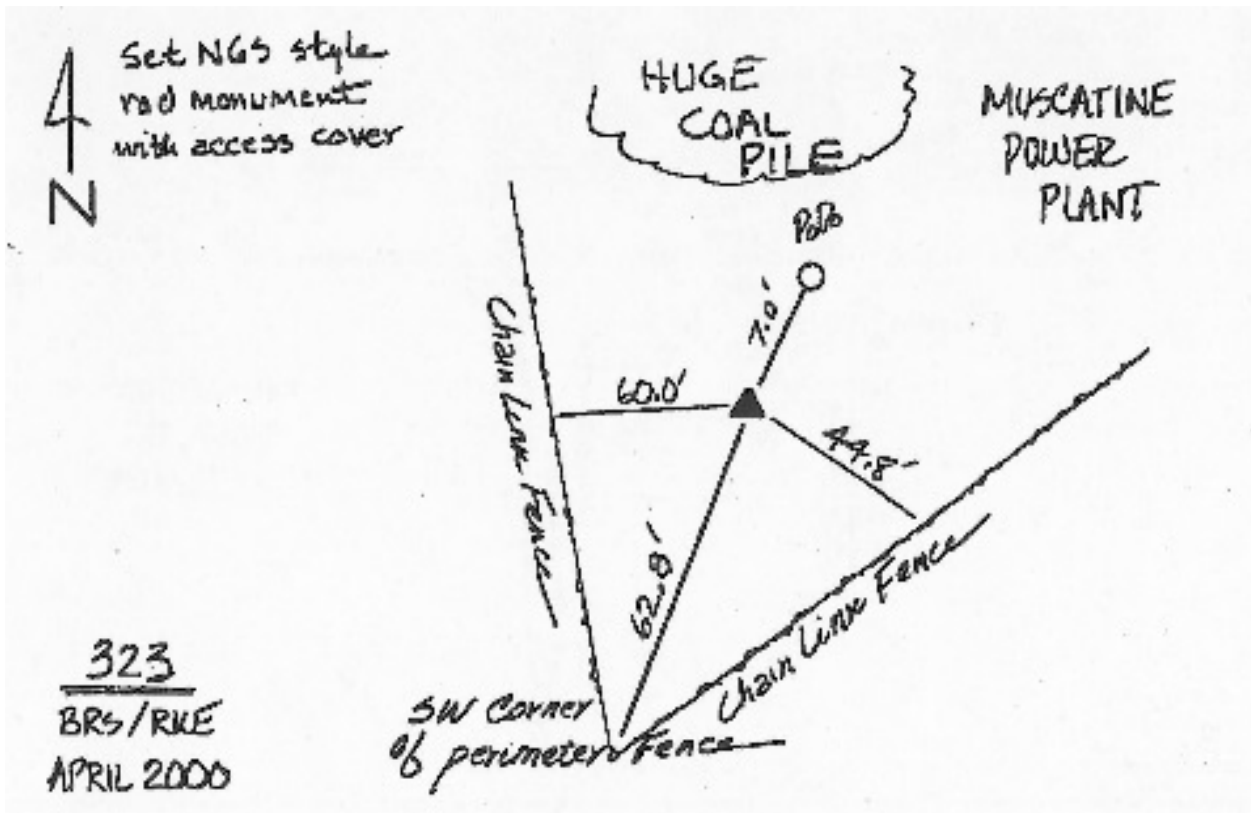
Designation: City of Muscatine GPS Control Pt 2000-323 (Set by ASI in 2000)

NAD 83(NA2011) Latitude: **N41°23'02.92563"** Longitude: **W91°03'22.26029"**
NAVD 88 Ortho Height: **542.890sft** Ellip. Ht: **434.819sft** **Geoid12A**

Iowa South Zone (1402) Northing: **513711.511sft** Easting: **2310940.783sft**
Mapping Angle: **1°36'35"** Combination Scale Factor: **0.999932723**

IaRCS Zone 14 Northing: **6613279.159sft** Easting: **24553189.022sft**
Mapping Angle: **0°07'41"** Combination Scale Factor: **1.0000004843**

Monument Type: 5/8" dia. driven aluminum rod with a 2-1/2" dia. aluminum cap and permanent magnet encased in a 5" dia. PVC pipe with an aluminum access cover.



This document was prepared by DCI on November 10, 2014 for use by Muscatine County, Iowa