

Muscatine County, Iowa

Horizontal Datum: **NAD 83(2011)** - Vertical Datum: **NAVD 1988**
Iowa State Plane South Zone (1402)
Iowa Regional Coordinate System Zone 14 Burlington
US Survey Feet
2014

Point Name: **324**

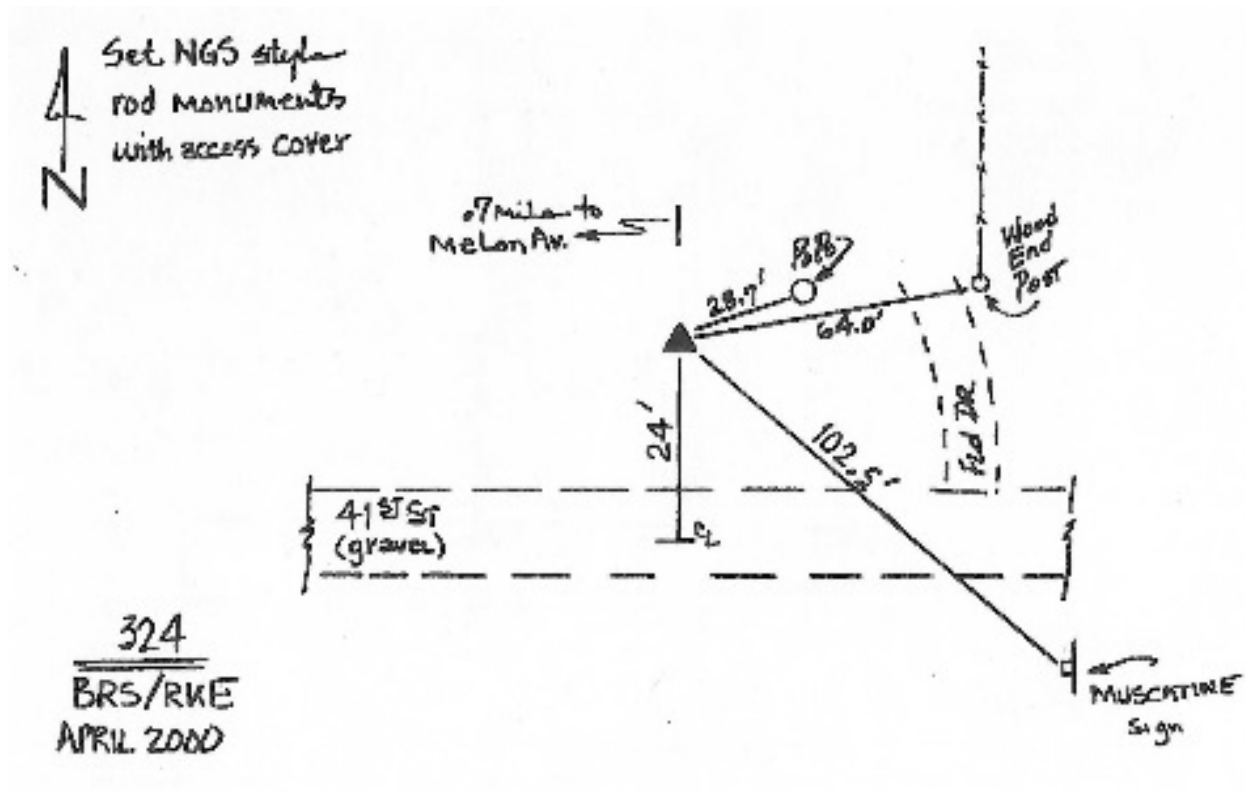
Designation: City of Muscatine GPS Control Pt 2000-324 (Set by ASI in 2000)

NAD 83(NA2011) Latitude: **N41°22'40.87599"** Longitude: **W91°08'18.05419"**
NAVD 88 Ortho Height: **540.060sft** Ellip. Ht: **431.979sft** **Geoid12A**

Iowa South Zone (1402) Northing: **510857.948sft** Easting: **2288462.923sft**
Mapping Angle: **1°33'20"** Combination Scale Factor: **0.999932523**

IaRCS Zone 14 Northing: **6611007.629sft** Easting: **24530643.385sft**
Mapping Angle: **0°04'26"** Combination Scale Factor: **0.9999984598**

Monument Type: 5/8" dia. driven aluminum rod with a 2-1/2" dia. aluminum cap and permanent magnet encased in a 5" dia. PVC pipe with an aluminum access cover.



This document was prepared by DCI on November 10, 2014 for use by Muscatine County, Iowa