

Muscatine County, Iowa

Horizontal Datum: **NAD 83(2011)** - Vertical Datum: **NAVD 1988**
Iowa State Plane South Zone (1402)
Iowa Regional Coordinate System Zone 14 Burlington
US Survey Feet
2014

Point Name: **329**

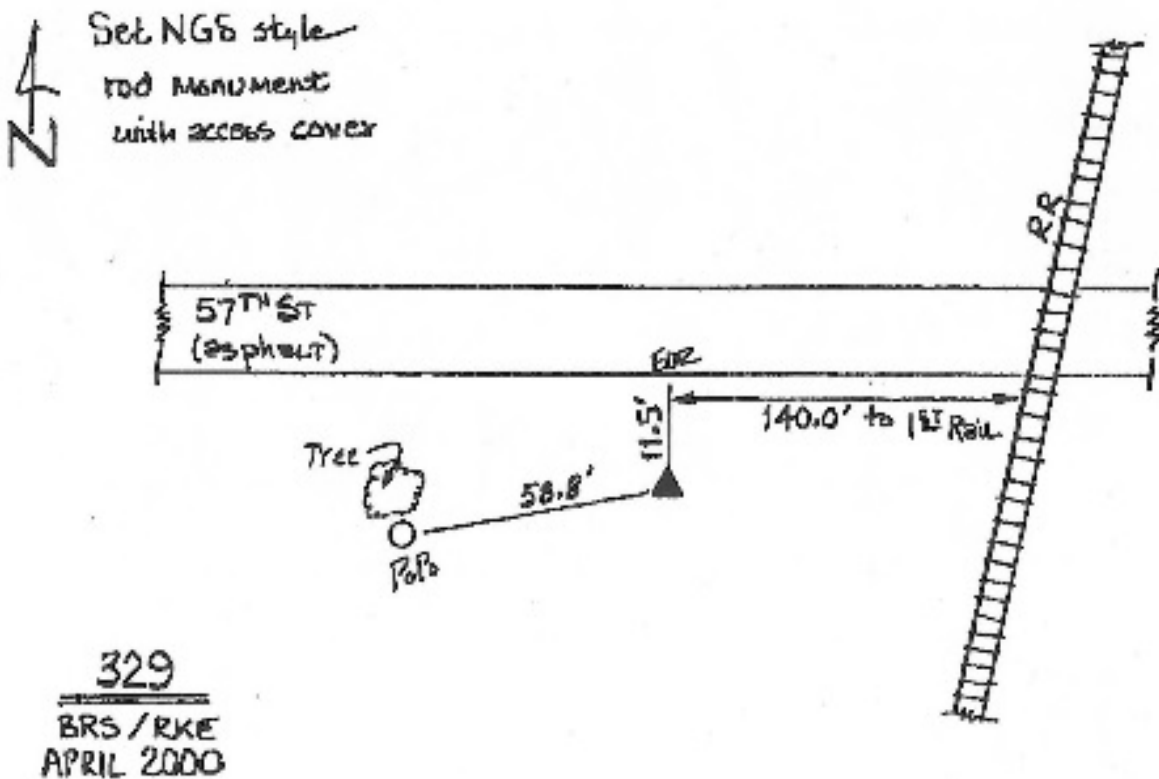
Designation: City of Muscatine GPS Control Pt 2000-329 (Set by ASI in 2000)

NAD 83(NA2011) Latitude: **N41°21'47.95266"** Longitude: **W91°07'08.34865"**
NAVD 88 Ortho Height: **547.640sft** Ellip. Ht: **439.514sft** **Geoid12A**

Iowa South Zone (1402) Northing: **505648.437sft** Easting: **2293921.390sft**
Mapping Angle: **1°34'06"** Combination Scale Factor: **0.999931405**

IaRCS Zone 14 Northing: **6605658.351sft** Easting: **24535965.665sft**
Mapping Angle: **0°05'12"** Combination Scale Factor: **0.9999985054**

Monument Type: 5/8" dia. driven aluminum rod with a 2-1/2" dia. aluminum cap and permanent magnet encased in a 5" dia. PVC pipe with an aluminum access cover.



This document was prepared by DCI on November 10, 2014 for use by Muscatine County, Iowa