

Muscatine County, Iowa

Horizontal Datum: **NAD 83(2011)** - Vertical Datum: **NAVD 1988**

Iowa State Plane South Zone (1402)

Iowa Regional Coordinate System Zone 14 Burlington

US Survey Feet

2014

Point Name: **330**

Designation: 330 (Set by DCI in 2014)

NAD 83(NA2011) Latitude: **N41°21'49.73683"** Longitude: **W91°09'35.28742"**

NAVD 88 Ortho Height: **537.724sft** Ellip. Ht: **429.623sft** **Geoid12A**

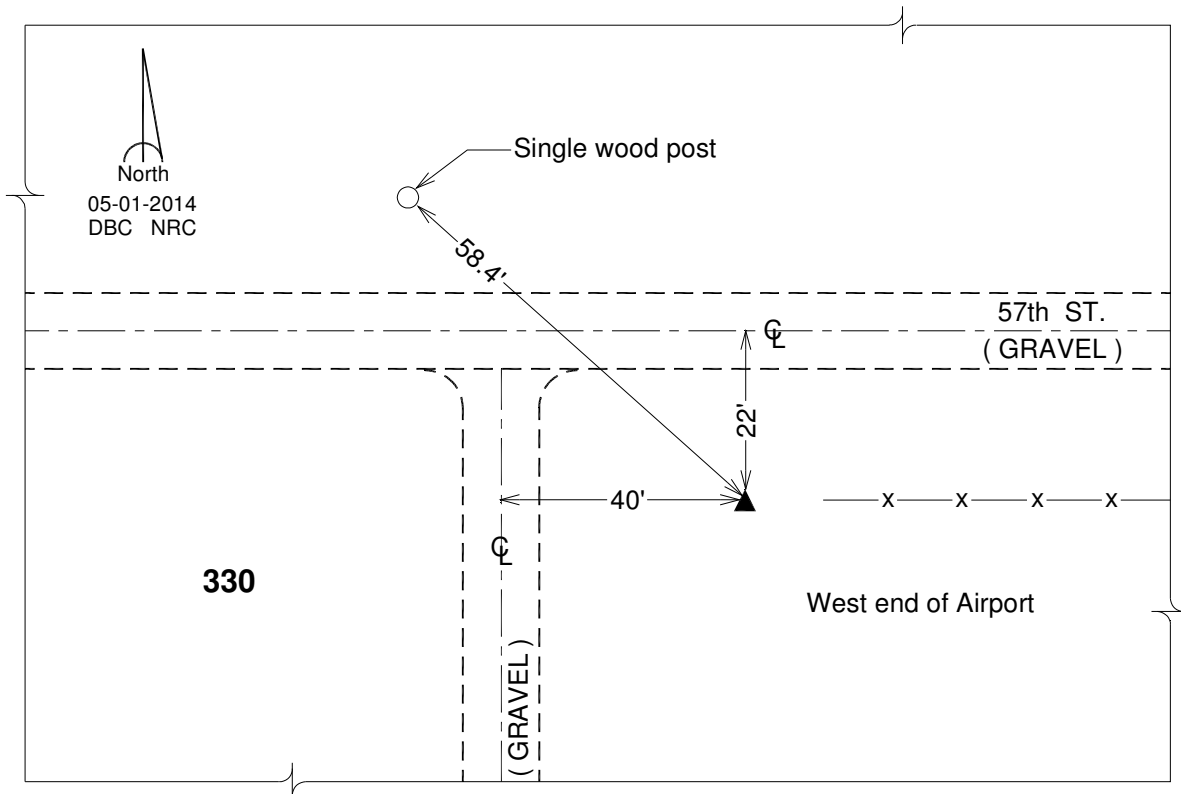
Iowa South Zone (1402) Northing: **505524.920sft** Easting: **2282716.612sft**

Mapping Angle: **1°32'29"** Combination Scale Factor: **0.999931902**

IaRCS Zone 14 Northing: **6605824.644sft** Easting: **24524760.694sft**

Mapping Angle: **0°03'35"** Combination Scale Factor: **0.9999981997**

Monument Type: Berntsen Top Security Rod Monument with a 2-1/2" dia. domed survey cap and permanent magnet encased in a white PVC pipe with a NGS style aluminum access cover.



This document was prepared by DCI on November 10, 2014 for use by Muscatine County, Iowa