

**Muscatine County, Iowa**

Horizontal Datum: **NAD 83(2011)** - Vertical Datum: **NAVD 1988**

Iowa State Plane South Zone (1402)

Iowa Regional Coordinate System Zone 14 Burlington

US Survey Feet

**2014**

Point Name: **332**

**Designation:** 332 (Set by DCI in 2014)

NAD 83(NA2011) Latitude: **N41°26'10.51608"** Longitude: **W91°05'00.23221"**

NAVD 88 Ortho Height: **698.050sft** Ellip. Ht: **590.151sft** **Geoid12A**

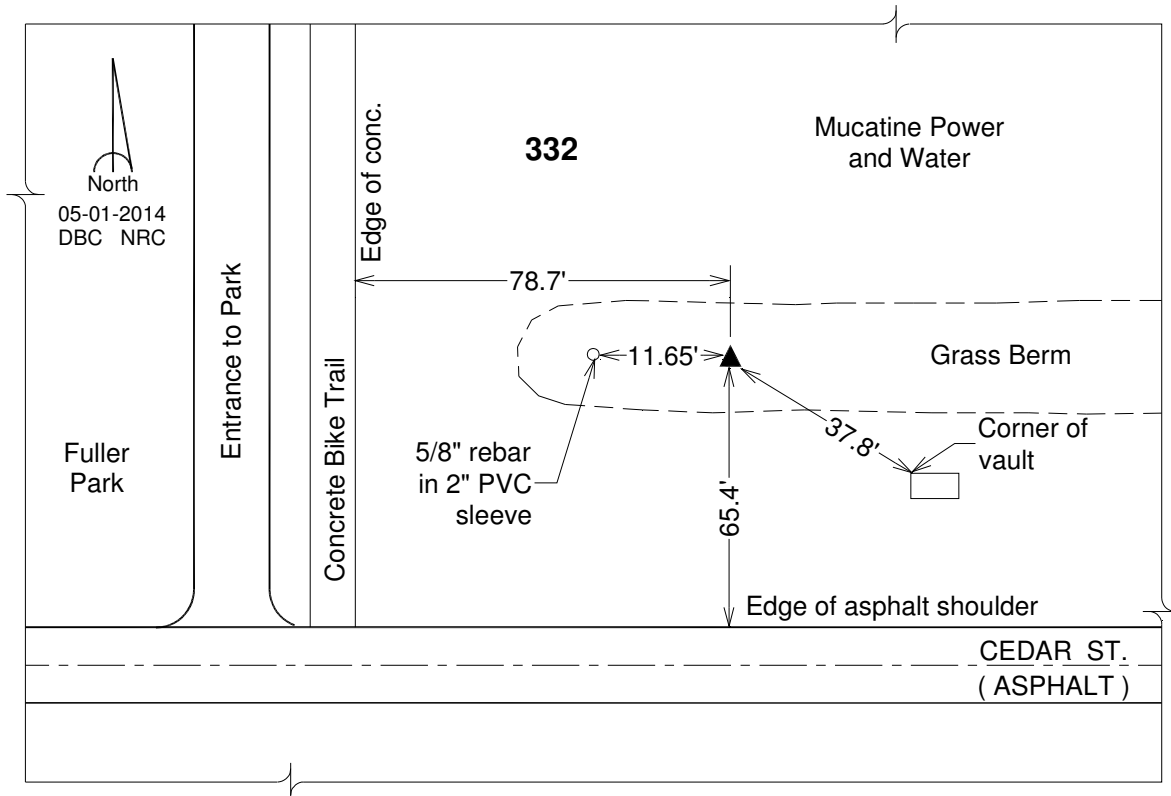
Iowa South Zone (1402) Northing: **532481.752sft** Easting: **2302948.321sft**

Mapping Angle: **1°35'31"** Combination Scale Factor: **0.999928627**

IaRCS Zone 14 Northing: **6632251.022sft** Easting: **24545684.055sft**

Mapping Angle: **0°06'37"** Combination Scale Factor: **0.9999922243**

**Monument Type:** Berntsen Top Security Rod Monument with a 2-1/2" dia. domed survey cap and permanent magnet encased in a white PVC pipe with a NGS style aluminum access cover.



*This document was prepared by DCI on November 10, 2014 for use by Muscatine County, Iowa*