

Muscatine County, Iowa

Horizontal Datum: **NAD 83(2011)** - Vertical Datum: **NAVD 1988**

Iowa State Plane South Zone (1402)

Iowa Regional Coordinate System Zone 14 Burlington

US Survey Feet

2014

Point Name: **400**

Designation: Photogrammetric Survey Marker

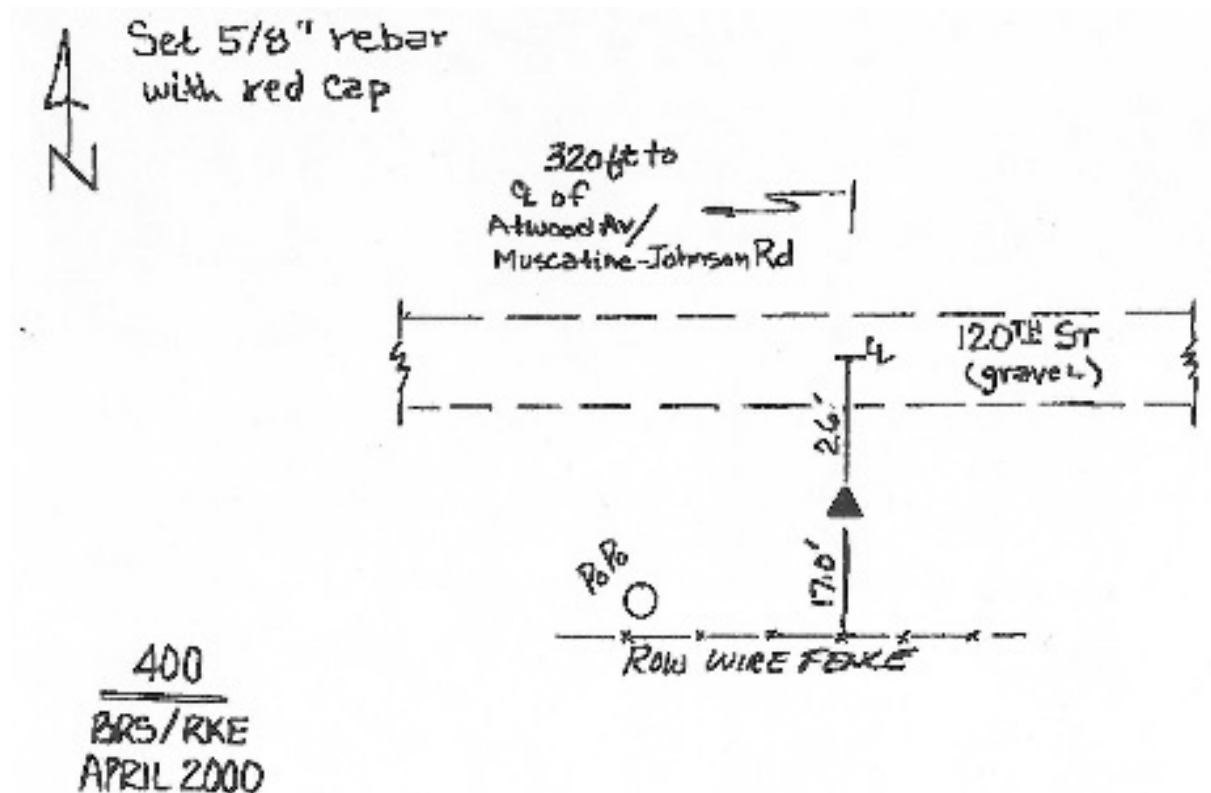
NAD 83(NA2011) Latitude: **N41°34'06.26512"** Longitude: **W91°21'55.96454"**

NAVD 88 Ortho Height: **714.193sft** Ellip. Ht: **606.899sft** **Geoid12A**

Iowa South Zone (1402) Northing: **578595.708sft** Easting: **2224430.207sft**
Mapping Angle: **1°24'21"** Combination Scale Factor: **0.999939945**

IaRCS Zone 14 Northing: **6680382.987sft** Easting: **24468380.513sft**
Mapping Angle: **-0°04'36"** Combination Scale Factor: **0.9999901829**

Monument Type: 5/8" x 30" deformed rebar with a red survey cap.



This document was prepared by DCI on November 10, 2014 for use by Muscatine County, Iowa