

Muscatine County, Iowa

Horizontal Datum: **NAD 83(2011)** - Vertical Datum: **NAVD 1988**

Iowa State Plane South Zone (1402)

Iowa Regional Coordinate System Zone 14 Burlington

US Survey Feet

2014

Point Name: **500 (Not Measured)**

Designation: ~~USGS vertical control station "667 1 LMT 1963"~~

NAD 83(NA2011) Latitude: **N41°37'40.606248"** Longitude: **W91°28'57.892089"**

NAVD 88 Ortho Height: **666.35**sft Ellip. Ht: **559.67**sft **Geoid96C**

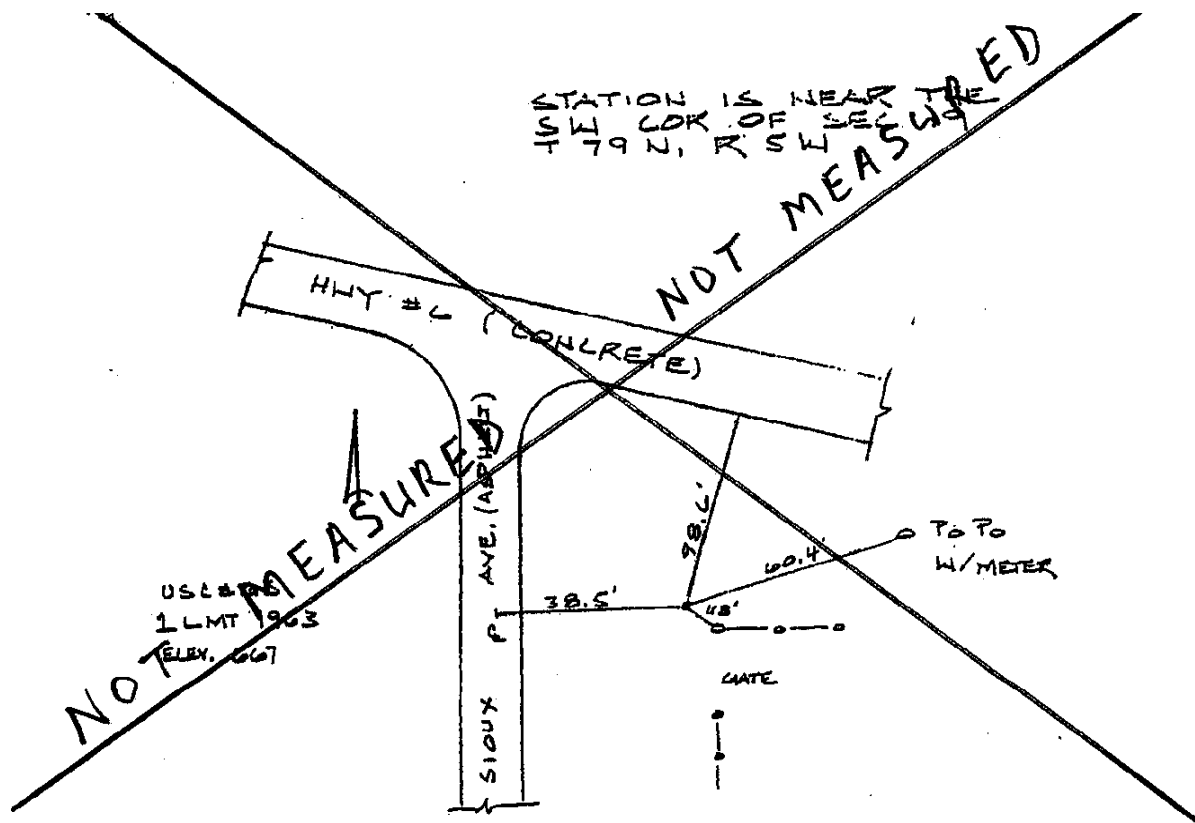
Iowa South Zone (1402) Northing: **599519.3**sft Easting: **2191865.07**sft

Mapping Angle: **1°19'44"** Combination Scale Factor: **0.99994933**

laRCS Zone 14 Northing: **N/A**sft Easting: **N/A**sft

Mapping Angle: **N/A** Combination Scale Factor: **N/A**

Monument Type: ~~A standard bench disk set in the top of a concrete post.~~



This document was prepared by DCI on November 10, 2014 for use by Muscatine County, Iowa