

Muscatine County, Iowa

Horizontal Datum: **NAD 83(2011)** - Vertical Datum: **NAVD 1988**

Iowa State Plane South Zone (1402)

Iowa Regional Coordinate System Zone 14 Burlington

US Survey Feet

2014

Point Name: **502 (Not Measured)**

Designation: ~~GBN control station "B-8" PID: MG0476~~

NAD 83(NA2011) Latitude: **N41°19'34.286850"** Longitude: **W91°33'39.594640"**

NAVD 88 Ortho Height: **753.17sft** Ellip. Ht: **645.71sft** **Geoid96C**

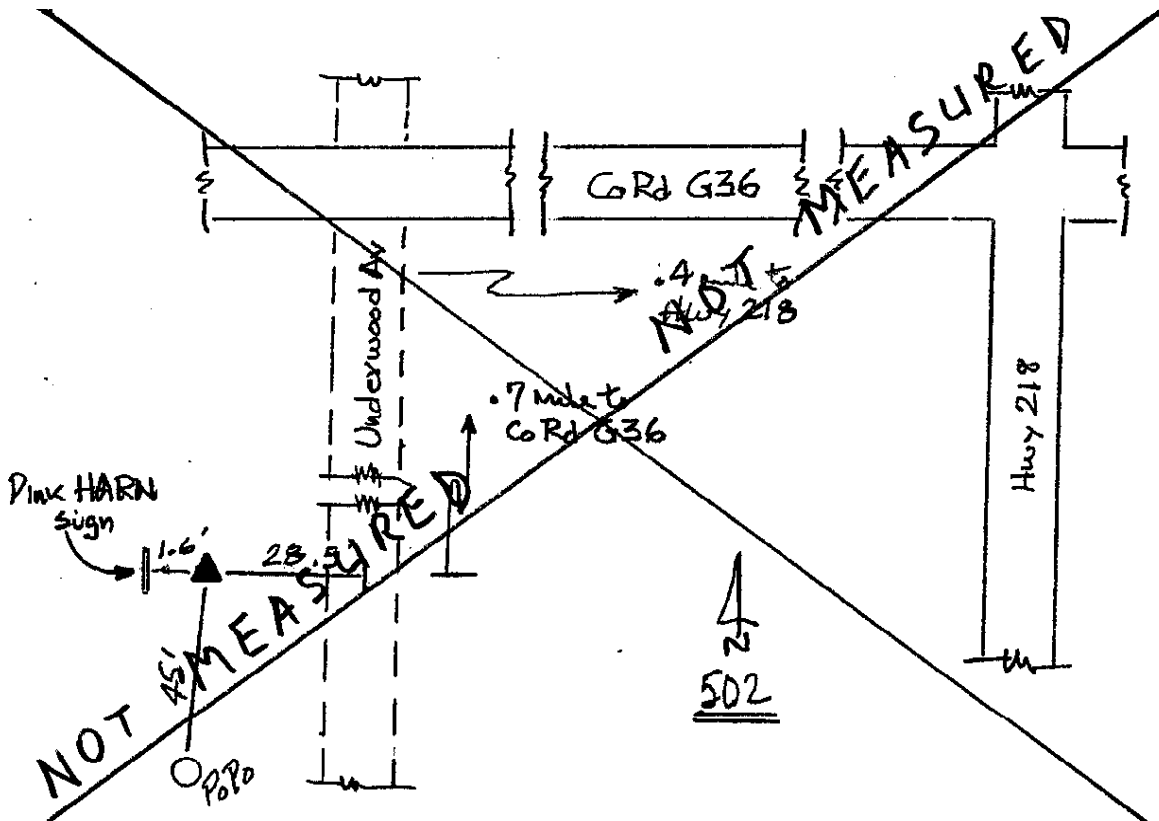
Iowa South Zone (1402) Northing: **489110.9sft** Easting: **2172928.35sft**

Mapping Angle: **1°16'38"** Combination Scale Factor: **0.99991987**

IaRCS Zone 14 Northing: **N/Asft** Easting: **N/Asft**

Mapping Angle: **N/A** Combination Scale Factor: **N/A**

Monument Type: ~~A standard bench disk set in the top of a concrete post.~~



This document was prepared by DCI on November 10, 2014 for use by Muscatine County, Iowa