

Muscatine County, Iowa

Horizontal Datum: **NAD 83(2011)** - Vertical Datum: **NAVD 1988**

Iowa State Plane South Zone (1402)

Iowa Regional Coordinate System Zone 14 Burlington

US Survey Feet

2014

Point Name: **503 (Not Measured)**

Designation: ~~NGS 1st order vertical control station "D 8" PID: MG0416~~

NAD 83(NA2011) Latitude: ~~**N41°21'14.809321"**~~ Longitude: ~~**W91°29'04.508123"**~~

NAVD 88 Ortho Height: ~~**683.4sft**~~ Ellip. Ht: ~~**575.96sft**~~ **Geoid96C**

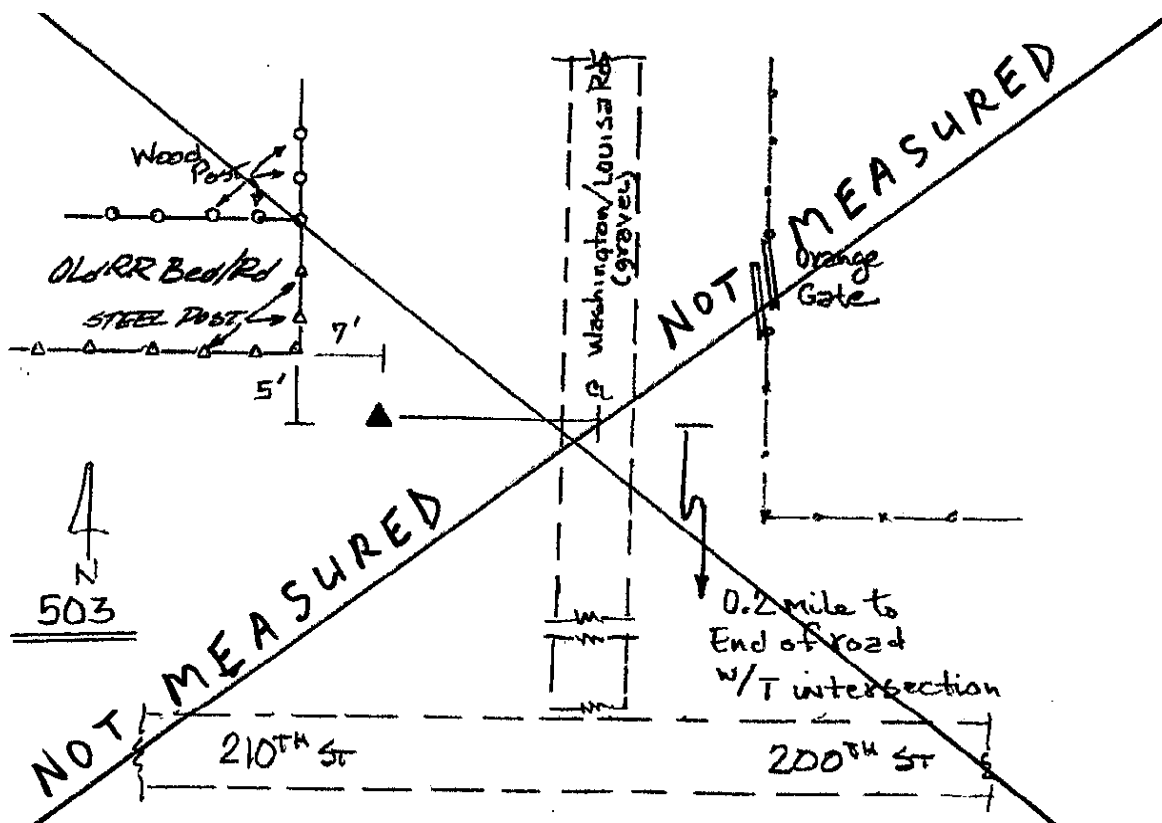
Iowa South Zone (1402) Northing: ~~**499758.99sft**~~ Easting: ~~**2193674.38sft**~~

Mapping Angle: ~~**1°19'39"**~~ Combination Scale Factor: ~~**0.99992439**~~

IaRCS Zone 14 Northing: ~~**N/Asft**~~ Easting: ~~**N/Asft**~~

Mapping Angle: ~~**N/A**~~ Combination Scale Factor: ~~**N/A**~~

Monument Type: ~~A standard bench disk set in the top of a concrete post.~~



This document was prepared by DCI on November 10, 2014 for use by Muscatine County, Iowa