

Muscatine County, Iowa

Horizontal Datum: **NAD 83(2011)** - Vertical Datum: **NAVD 1988**

Iowa State Plane South Zone (1402)

Iowa Regional Coordinate System Zone 14 Burlington

US Survey Feet

2014

Point Name: **504**

Designation: NGS 3rd order vertical control station "H 77 RESET" PID: MG0918

NAD 83(NA2011) Latitude: **N41°27'59.21506"** Longitude: **W91°19'06.76589"**

NAVD 88 Ortho Height: **626.360sft** Ellip. Ht: **518.716sft** **Geoid12A**

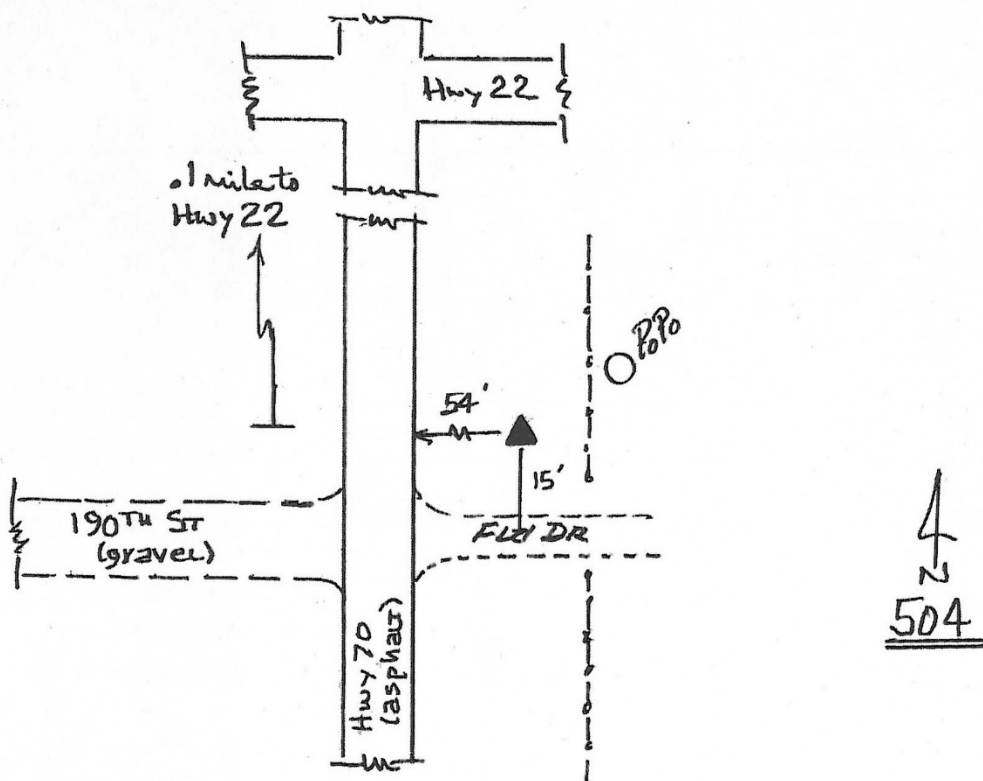
Iowa South Zone (1402) Northing: **541775.961sft** Easting: **2238218.830sft**

Mapping Angle: **1°26'13"** Combination Scale Factor: **0.999934335**

laRCS Zone 14 Northing: **6643216.794sft** Easting: **24481212.664sft**

Mapping Angle: **-0°02'43"** Combination Scale Factor: **0.9999936514**

Monument Type: A standard bench disk set in the top of a concrete post.



This document was prepared by DCI on November 10, 2014 for use by Muscatine County, Iowa