

Muscatine County, Iowa

Horizontal Datum: **NAD 83(2011)** - Vertical Datum: **NAVD 1988**

Iowa State Plane South Zone (1402)

Iowa Regional Coordinate System Zone 14 Burlington

US Survey Feet

2014

Point Name: **507**

Designation: USGS vertical control station "4 DRL 1964"

NAD 83(NA2011) Latitude: **N41°16'21.55732"** Longitude: **W91°09'31.63952"**

NAVD 88 Ortho Height: **696.810sft** Ellip. Ht: **588.543sft** **Geoid12A**

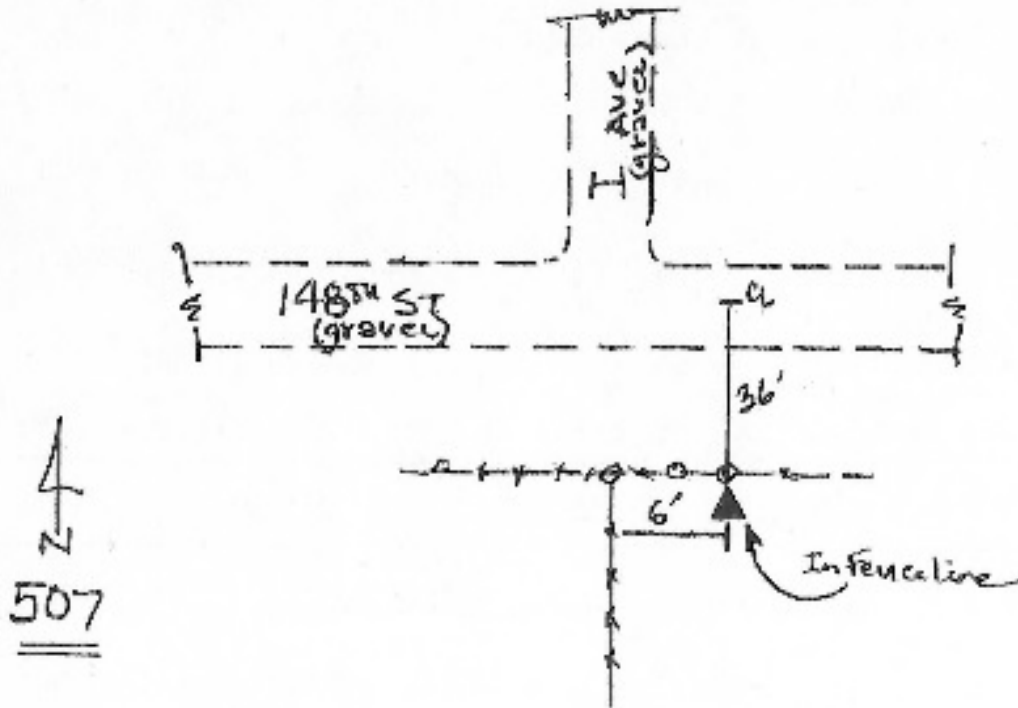
Iowa South Zone (1402) Northing: **472329.793sft** Easting: **2283888.550sft**

Mapping Angle: **1°32'32"** Combination Scale Factor: **0.999921069**

IaRCS Zone 14 Northing: **6572608.047sft** Easting: **24525073.775sft**

Mapping Angle: **0°03'37"** Combination Scale Factor: **0.9999906343**

Monument Type: A standard bench disk set in the top of a concrete post.



This document was prepared by DCI on November 10, 2014 for use by Muscatine County, Iowa