

**Muscatine County, Iowa**

Horizontal Datum: **NAD 83(2011)** - Vertical Datum: **NAVD 1988**

Iowa State Plane South Zone (1402)

Iowa Regional Coordinate System Zone 14 Burlington

US Survey Feet

**2014**

Point Name: **510 (Not Measured)**

**Designation:** TBM for "P 70" NGS 2nd order vert control PID: MG0337

NAD 83(NA2011) Latitude: **N41°44'33.591112"** Longitude: **W90°46'49.949715"**

NAVD 88 Ortho Height: **670.39sft** Ellip. Ht: **563.45sft** **Geoid96C**

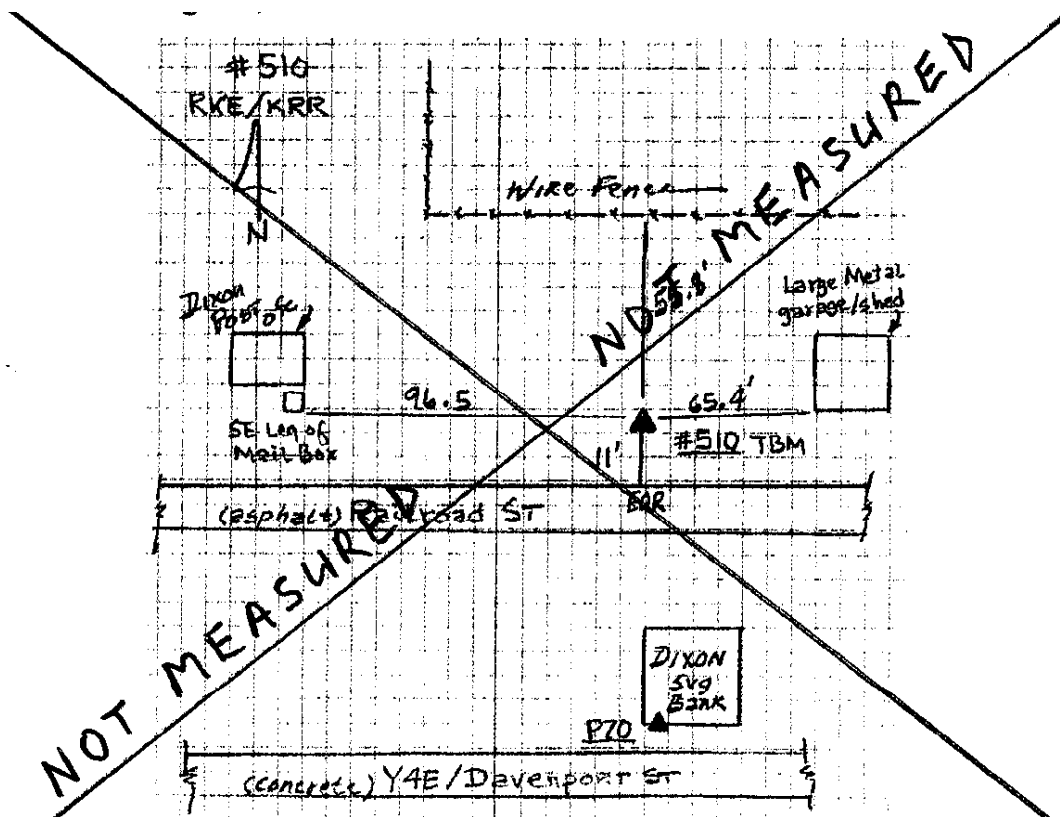
Iowa South Zone (1402) Northing: **646527.08sft** Easting: **2382463.3sft**

Mapping Angle: **1°47'29"** Combination Scale Factor: **0.99996608**

IaRCS Zone 14 Northing: **N/Asft** Easting: **N/Asft**

Mapping Angle: **N/A** Combination Scale Factor: **N/A**

**Monument Type:** 5/8" x 30" deformed rebar with a red survey cap.



*This document was prepared by DCI on November 10, 2014 for use by Muscatine County, Iowa*