

**Muscatine County, Iowa**  
 Horizontal Datum: **NAD 83(2011)** - Vertical Datum: **NAVD 1988**  
 Iowa State Plane South Zone (1402)  
 Iowa Regional Coordinate System Zone 14 Burlington  
 US Survey Feet  
**2014**

Point Name: **513 (Not Measured)**

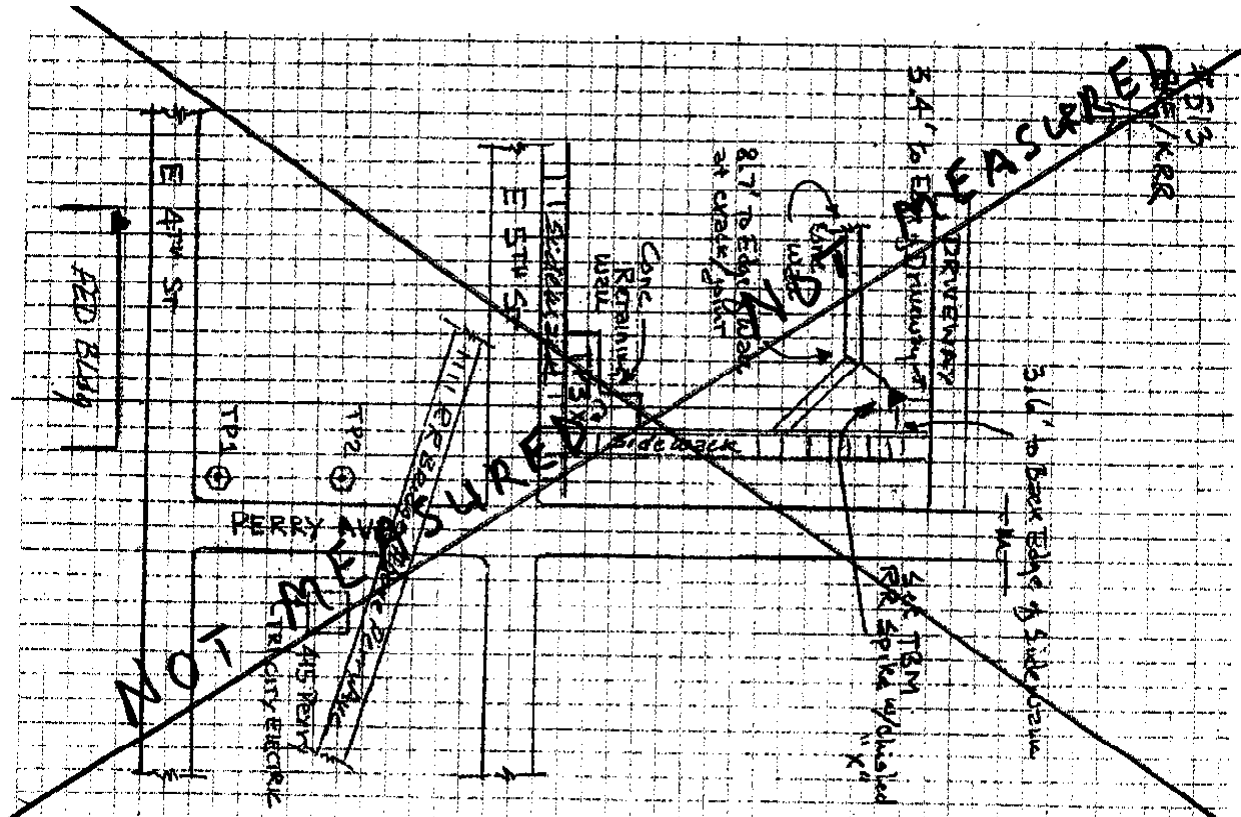
**Designation:** TBM for "DAVENPORT" NGS 2nd order vert control PID: MG0321

NAD 83(NA2011) Latitude: **N41°31'29.999640"** Longitude: **W90°34'21.999458"**  
 NAVD 88 Ortho Height: **598.84sft** Ellip. Ht: **491.55sft** **Geoid96C**

Iowa South Zone (1402) Northing: **569099.27sft** Easting: **2441802.89sft**  
 Mapping Angle: **1°55'41"** Combination Scale Factor: **0.99994082**

IaRCS Zone 14 Northing: **N/Asft** Easting: **N/Asft**  
 Mapping Angle: **N/A** Combination Scale Factor: **N/A**

**Monument Type:** 5/8" x 30" deformed rebar with a red survey cap.



*This document was prepared by DCI on November 10, 2014 for use by Muscatine County, Iowa*