

Muscatine County, Iowa

Horizontal Datum: **NAD 83(2011)** - Vertical Datum: **NAVD 1988**

Iowa State Plane South Zone (1402)

Iowa Regional Coordinate System Zone 14 Burlington

US Survey Feet

2014

Point Name: **631**

Designation: Scott Co. GPS Control Pt 2005-631 (Set by DCI in 2005)

NAD 83(NA2011) Latitude: **N41°35'49.06962"** Longitude: **W90°50'29.18996"**

NAVD 88 Ortho Height: **718.560sft** Ellip. Ht: **611.006sft** **Geoid12A**

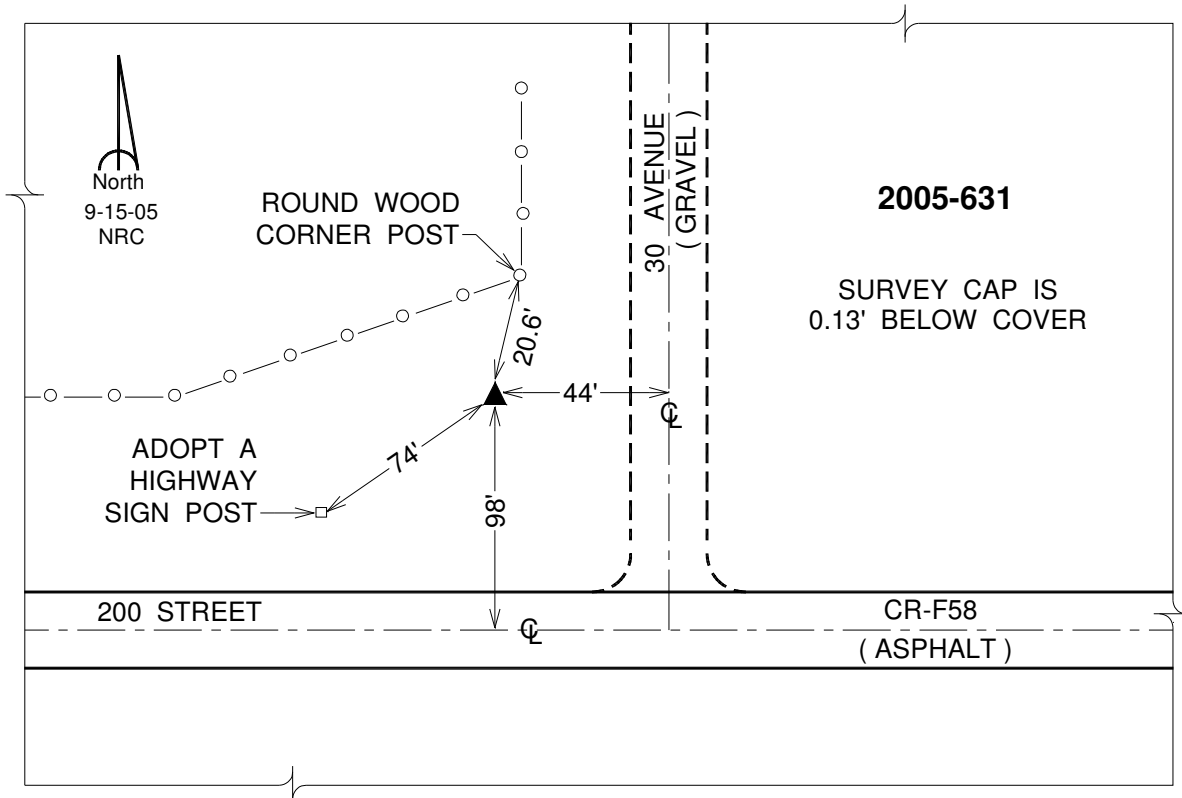
Iowa South Zone (1402) Northing: **592947.059sft** Easting: **2367473.432sft**

Mapping Angle: **1°45'04"** Combination Scale Factor: **0.999943068**

laRCS Zone 14 Northing: **6691032.253sft** Easting: **24611754.277sft**

Mapping Angle: **0°16'16"** Combination Scale Factor: **1.0000031162**

Monument Type: Berntsen Top Security Rod Monument with a 2-1/2" dia. domed survey cap and permanent magnet encased in a 5" dia. PVC pipe with a NGS style aluminum access cover.



This document was prepared by DCI on November 10, 2014 for use by Muscatine County, Iowa