

Muscatine County, Iowa

Horizontal Datum: **NAD 83(2011)** - Vertical Datum: **NAVD 1988**

Iowa State Plane South Zone (1402)

Iowa Regional Coordinate System Zone 14 Burlington

US Survey Feet

2014

Point Name: **801**

Designation: 801 (Set by Secondary Roads Dept. in 2002)

NAD 83(NA2011) Latitude: **N41°31'14.60850"** Longitude: **W90°51'26.54028"**

NAVD 88 Ortho Height: **777.206sft** Ellip. Ht: **669.544sft** **Geoid12A**

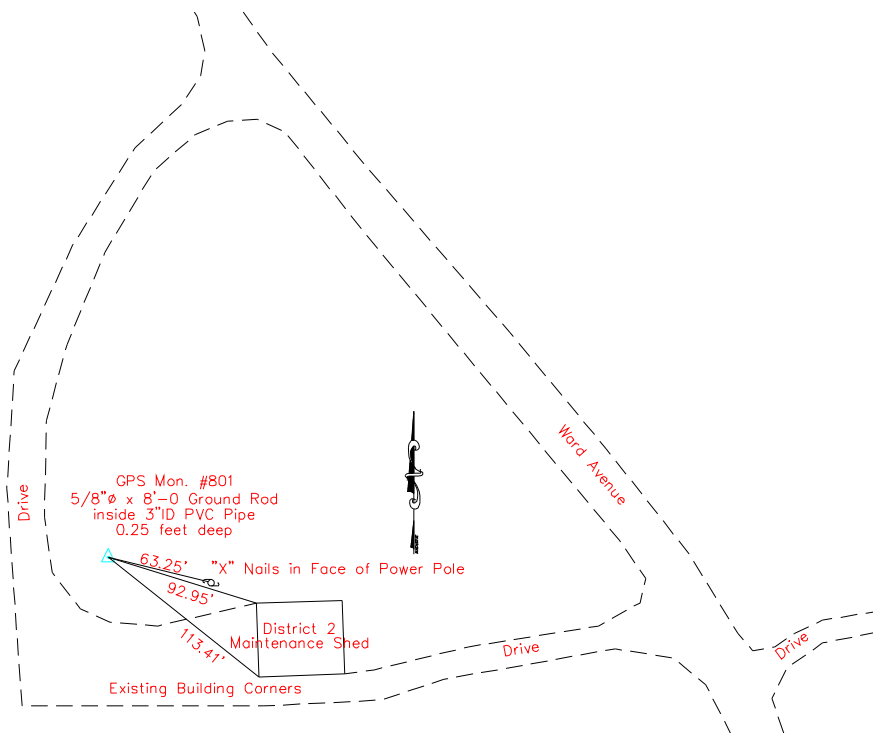
Iowa South Zone (1402) Northing: **565047.600sft** Easting: **2363961.936sft**

Mapping Angle: **1°44'27"** Combination Scale Factor: **0.999931970**

IaRCS Zone 14 Northing: **6663231.036sft** Easting: **24607523.002sft**

Mapping Angle: **0°15'37"** Combination Scale Factor: **0.9999992628**

Monument Type: 5/8" copper rod.



This document was prepared by DCI on November 10, 2014 for use by Muscatine County, Iowa