

Muscatine County, Iowa

Horizontal Datum: **NAD 83(2011)** - Vertical Datum: **NAVD 1988**

Iowa State Plane South Zone (1402)

Iowa Regional Coordinate System Zone 14 Burlington

US Survey Feet

2014

Point Name: **802**

Designation: 802 (Set by Secondary Roads Dept. in 2002)

NAD 83(NA2011) Latitude: **N41°35'09.07303"** Longitude: **W91°01'07.41636"**

NAVD 88 Ortho Height: **674.863sft** Ellip. Ht: **567.375sft** **Geoid12A**

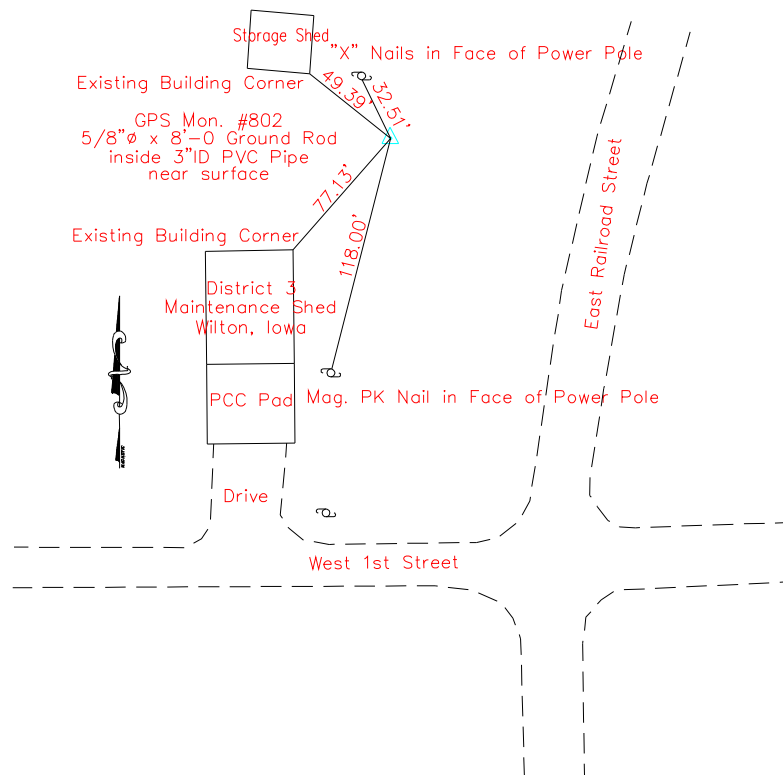
Iowa South Zone (1402) Northing: **587467.959sft** Easting: **2319118.971sft**

Mapping Angle: **1°38'04"** Combination Scale Factor: **0.999943829**

IaRCS Zone 14 Northing: **6686804.016sft** Easting: **24563271.715sft**

Mapping Angle: **0°09'13"** Combination Scale Factor: **0.9999955011**

Monument Type: 5/8" copper rod.



This document was prepared by DCI on November 10, 2014 for use by Muscatine County, Iowa