

Muscatine County, Iowa

Horizontal Datum: **NAD 83(2011)** - Vertical Datum: **NAVD 1988**

Iowa State Plane South Zone (1402)

Iowa Regional Coordinate System Zone 14 Burlington

US Survey Feet

2014

Point Name: **803**

Designation: 803 (Set by Secondary Roads Dept. in 2002)

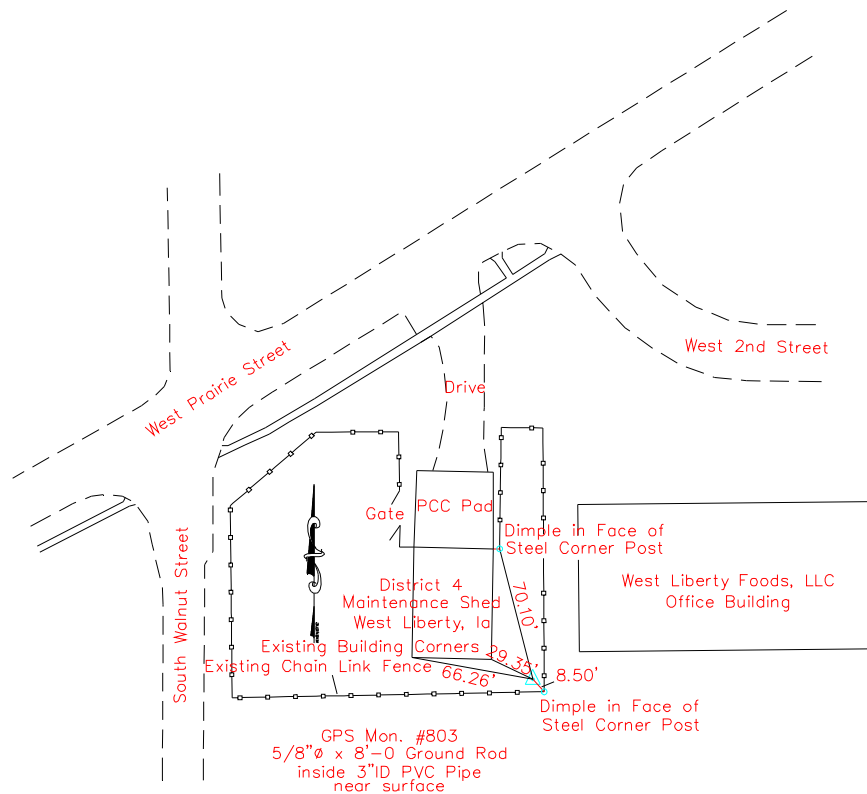
NAD 83(NA2011) Latitude: **N41°34'05.78703"** Longitude: **W91°16'10.99827"**

NAVD 88 Ortho Height: **657.905sft** Ellip. Ht: **550.567sft** **Geoid12A**

Iowa South Zone (1402) Northing: **579205.145sft** Easting: **2250644.467sft**
Mapping Angle: **1°28'09"** Combination Scale Factor: **0.999942618**

IaRCS Zone 14 Northing: **6680314.056sft** Easting: **24494603.066sft**
Mapping Angle: **-0°00'47"** Combination Scale Factor: **0.9999917616**

Monument Type: 5/8" copper rod.



This document was prepared by DCI on November 10, 2014 for use by Muscatine County, Iowa