

Muscatine County, Iowa

Horizontal Datum: **NAD 83(2011)** - Vertical Datum: **NAVD 1988**

Iowa State Plane South Zone (1402)

Iowa Regional Coordinate System Zone 14 Burlington

US Survey Feet

2014

Point Name: **804**

Designation: 804 (Set by Secondary Roads Dept. in 2002)

NAD 83(NA2011) Latitude: **N41°29'07.76237"** Longitude: **W91°18'23.79845"**

NAVD 88 Ortho Height: **634.399sft** Ellip. Ht: **526.811sft** **Geoid12A**

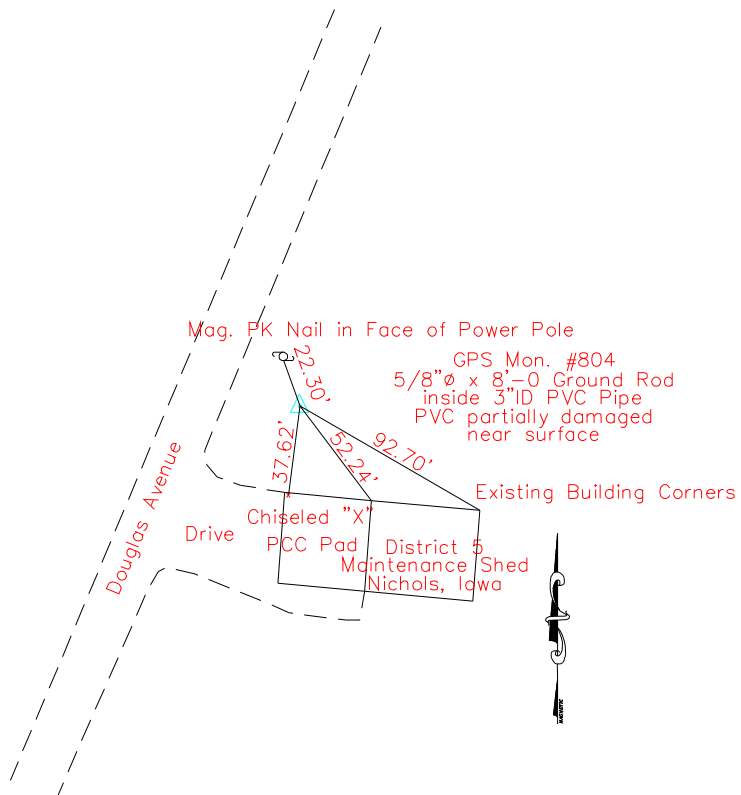
Iowa South Zone (1402) Northing: **548793.852sft** Easting: **2241313.969sft**

Mapping Angle: **1°26'41"** Combination Scale Factor: **0.999935541**

IaRCS Zone 14 Northing: **6650152.676sft** Easting: **24484488.499sft**

Mapping Angle: **-0°02'15"** Combination Scale Factor: **0.9999931367**

Monument Type: 5/8" copper rod.



This document was prepared by DCI on November 10, 2014 for use by Muscatine County, Iowa