

Muscatine County, Iowa

Horizontal Datum: **NAD 83(2011)** - Vertical Datum: **NAVD 1988**

Iowa State Plane South Zone (1402)

Iowa Regional Coordinate System Zone 14 Burlington

US Survey Feet

2014

Point Name: **807**

Designation: 807 (Set by Secondary Roads Dept. in 2002)

NAD 83(NA2011) Latitude: **N41°24'56.01661"** Longitude: **W91°08'25.13647"**

NAVD 88 Ortho Height: **738.314sft** Ellip. Ht: **630.363sft** **Geoid12A**

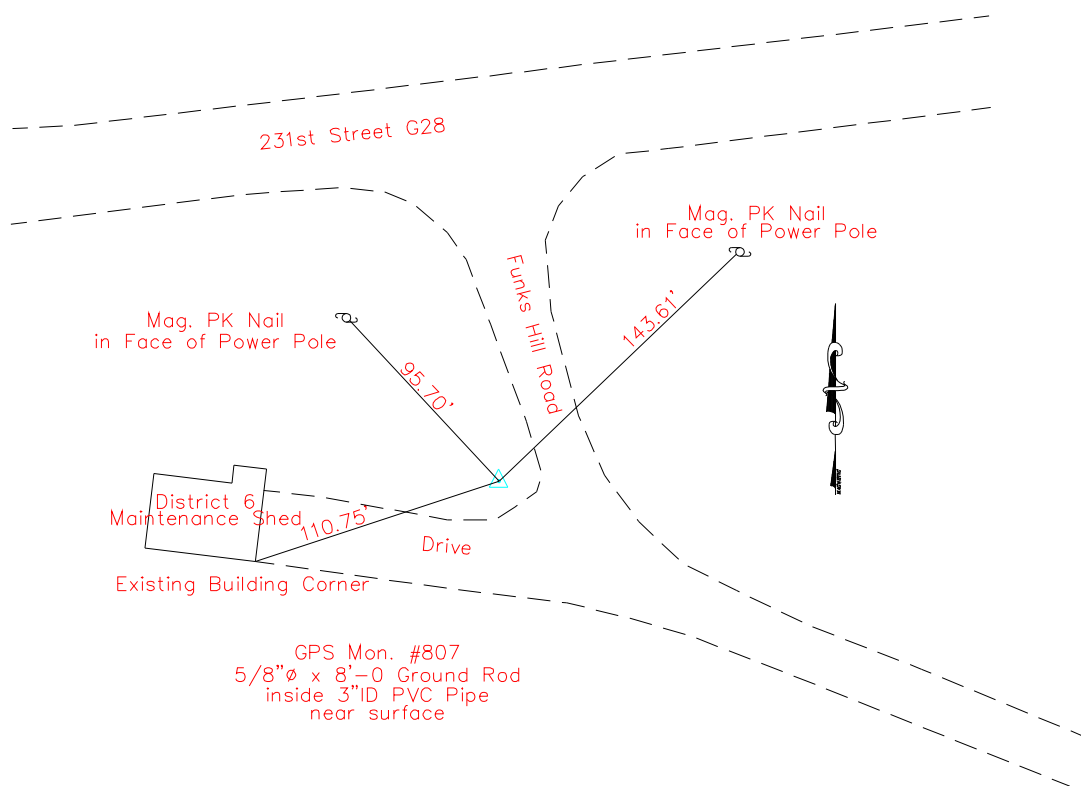
Iowa South Zone (1402) Northing: **524515.916sft** Easting: **2287552.218sft**

Mapping Angle: **1°33'16"** Combination Scale Factor: **0.999925292**

IaRCS Zone 14 Northing: **6624685.467sft** Easting: **24530086.134sft**

Mapping Angle: **0°04'21"** Combination Scale Factor: **0.9999889549**

Monument Type: 5/8" copper rod.



This document was prepared by DCI on November 10, 2014 for use by Muscatine County, Iowa