

Muscatine County, Iowa

Horizontal Datum: **NAD 83(2011)** - Vertical Datum: **NAVD 1988**

Iowa State Plane South Zone (1402)

Iowa Regional Coordinate System Zone 14 Burlington

US Survey Feet

2014

Point Name: **808**

Designation: 808 (Set by Secondary Roads Dept. in 2002)

NAD 83(NA2011) Latitude: **N41°27'44.27996"** Longitude: **W91°02'18.95234"**

NAVD 88 Ortho Height: **615.887sft** Ellip. Ht: **508.064sft** **Geoid12A**

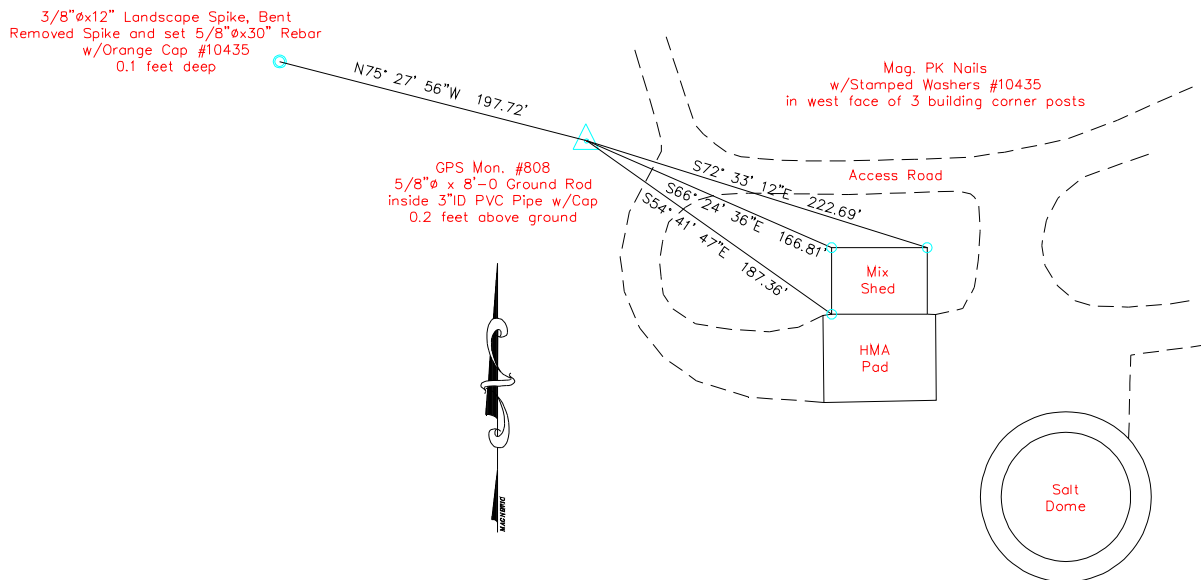
Iowa South Zone (1402) Northing: **542312.358sft** Easting: **2314958.848sft**

Mapping Angle: **1°37'17"** Combination Scale Factor: **0.999934510**

IaRCS Zone 14 Northing: **6641768.431sft** Easting: **24557945.499sft**

Mapping Angle: **0°08'24"** Combination Scale Factor: **0.9999975933**

Monument Type: 5/8" copper rod.



This document was prepared by DCI on November 10, 2014 for use by Muscatine County, Iowa