

Muscatine County, Iowa

Horizontal Datum: **NAD 83(2011)** - Vertical Datum: **NAVD 1988**

Iowa State Plane South Zone (1402)

Iowa Regional Coordinate System Zone 14 Burlington

US Survey Feet

2014

Point Name: **961**

Designation: NGS 2nd order control station "LAKE" PID: MG0798

NAD 83(NA2011) Latitude: **N41°26'55.34603"** Longitude: **W91°07'40.60540"**

NAVD 88 Ortho Height: **745.441sft** Ellip. Ht: **637.599sft** **Geoid12A**

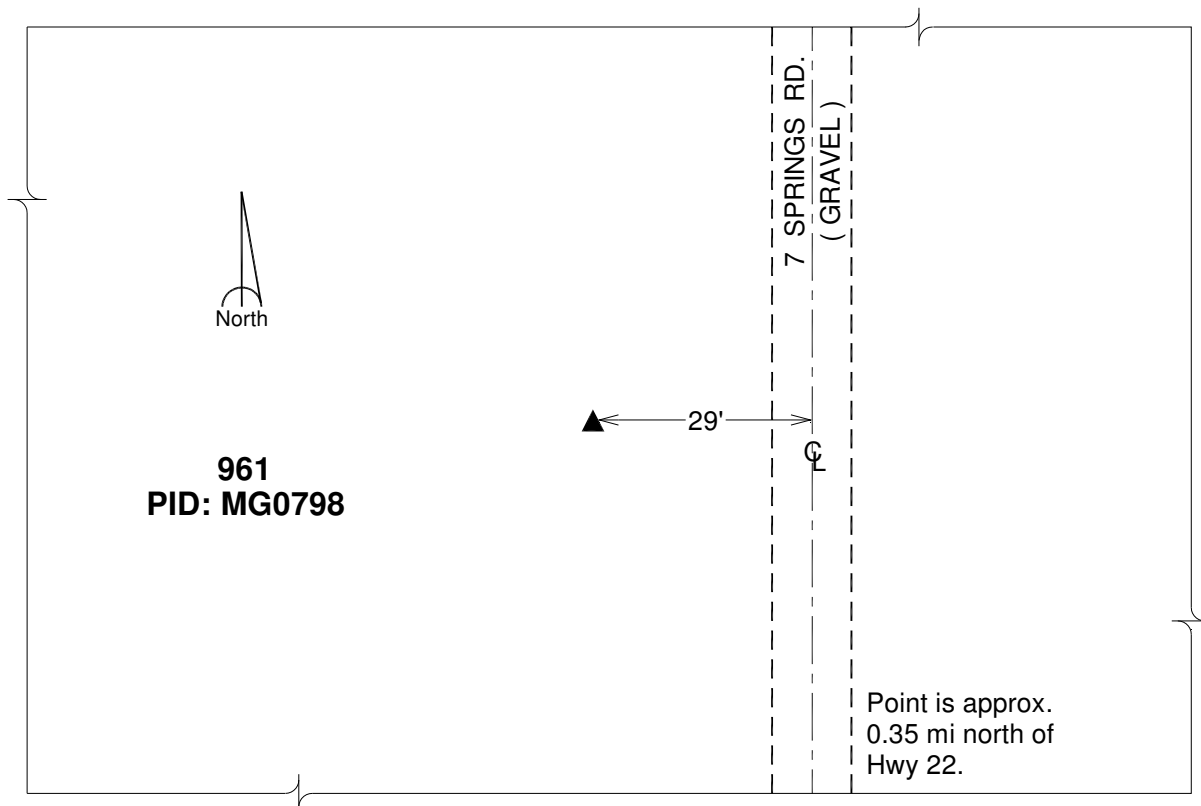
Iowa South Zone (1402) Northing: **536681.189sft** Easting: **2290614.423sft**

Mapping Angle: **1°33'45"** Combination Scale Factor: **0.999927277**

IaRCS Zone 14 Northing: **6636768.247sft** Easting: **24533462.097sft**

Mapping Angle: **0°04'51"** Combination Scale Factor: **0.9999888548**

Monument Type: A survey disk stamped "LAKE 1968" and crimped onto 10 ft length of copper coated rod, driven flush with ground and set in 6 in. tile filled with gravel.



This document was prepared by DCI on November 10, 2014 for use by Muscatine County, Iowa