

Page County, Iowa
 Iowa South Zone (1402)
 Horiz. Datum: **NAD83(NA2011)**
 Vert. Datum: NAVD 1988
 US Survey Feet
2013

Point Name: **1**

Designation: 2008-001 Page Co GPS Control Pt (Set by DCI in 2008)

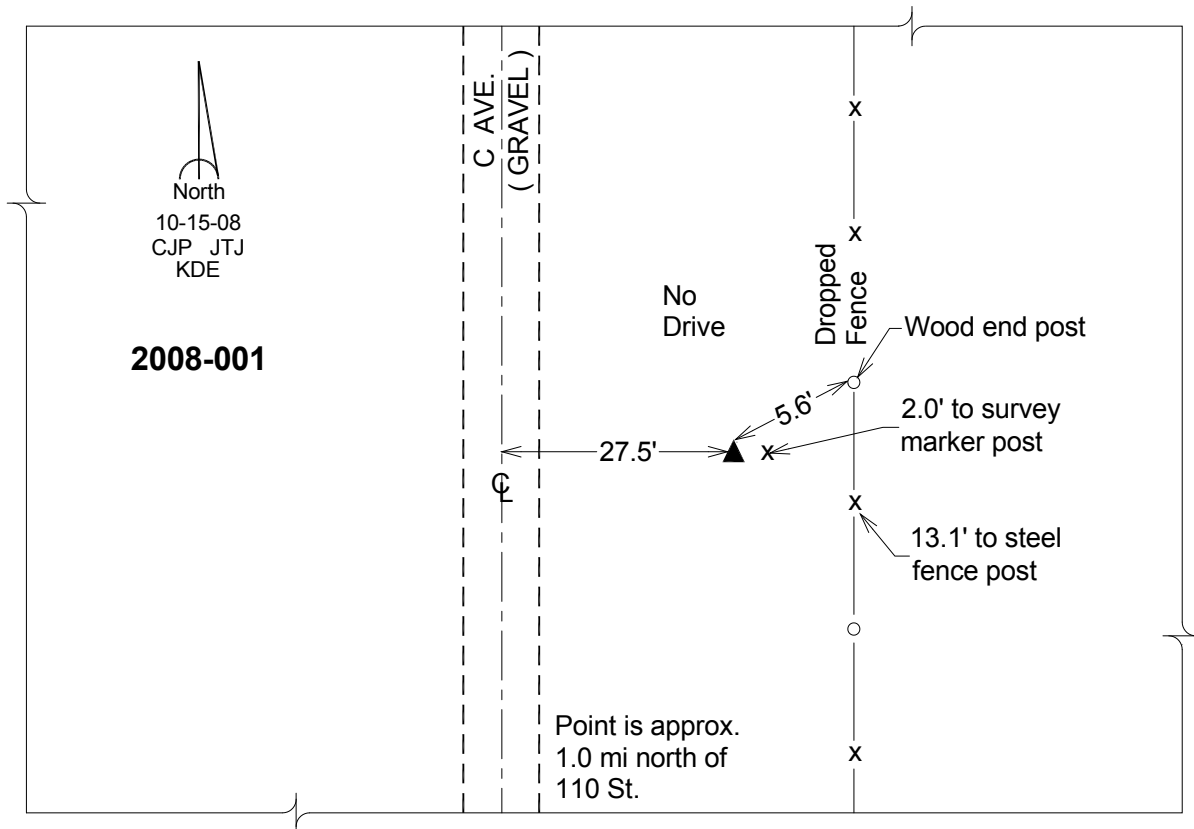
Northing: **333269.32sft** Easting: **1135276.66sft**

Orthometric Height: **1150.60sft** Ellipsoid Height: **1051.97sft** **Geoid12A**

Latitude: **N40°54'00.64623"** Longitude: **W95°19'38.80195"**

Mapping Angle: **-1°12'13"** Combination Scale Factor: **0.999911872**

Monument Type: Berntsen 3/4" Top Security Rod Monument with a 2-1/2" dia. domed survey cap and permanent magnet encased in a white PVC pipe with a NGS style alum. access cover.



This document was prepared by DCI on 04-16-2013 for use by Page County, Iowa.