

Page County, Iowa
Iowa South Zone (1402)
Horiz. Datum: **NAD83(NA2011)**
Vert. Datum: NAVD 1988
US Survey Feet
2013

Point Name: **3**

Designation: 2008-003 Page Co GPS Control Pt (Set by DCI in 2008)

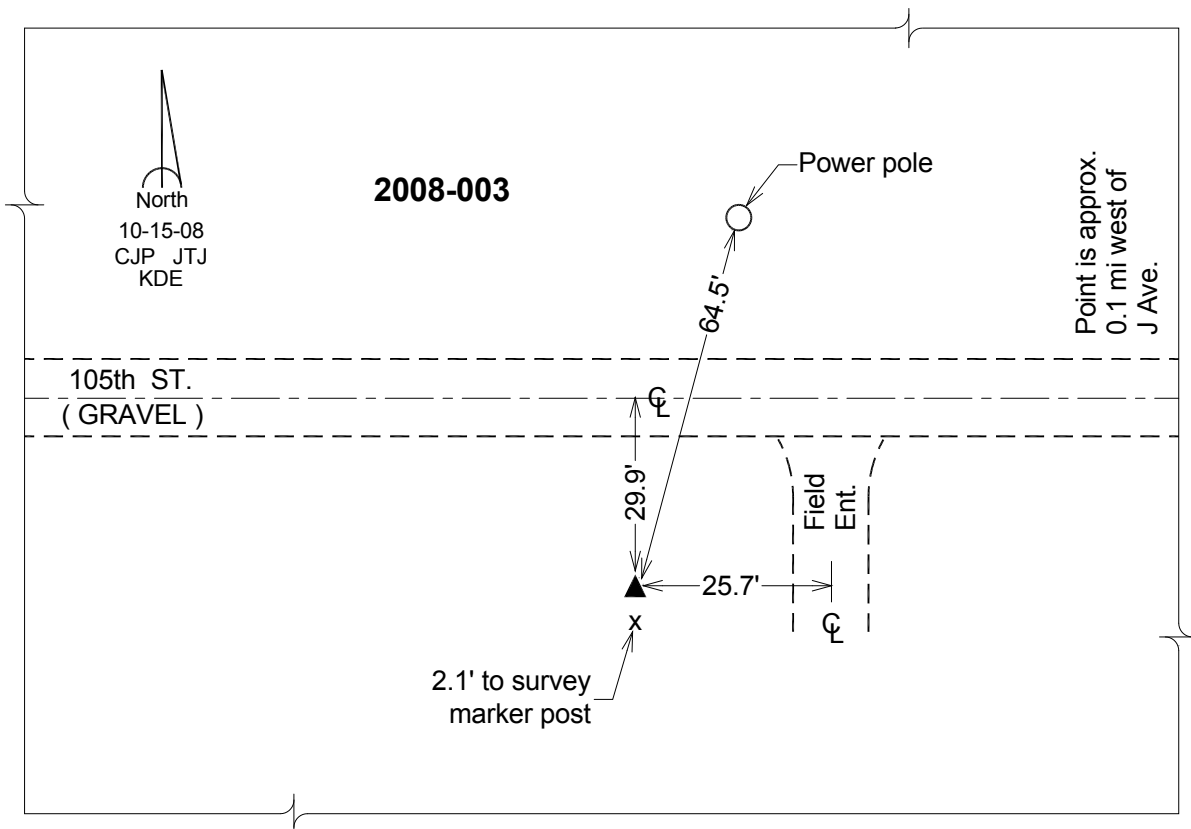
Northing: **330247.18**sft Easting: **1171637.61**sft

Orthometric Height: **1206.15**sft Ellipsoid Height: **1106.38**sft **Geoid12A**

Latitude: **N40°53'38.06591"** Longitude: **W95°11'44.60452"**

Mapping Angle: **-1°07'01"** Combination Scale Factor: **0.999909853**

Monument Type: Berntsen 3/4" Top Security Rod Monument with a 2-1/2" dia. domed survey cap and permanent magnet encased in a white PVC pipe with a NGS style alum. access cover.



This document was prepared by DCI on 04-16-2013 for use by Page County, Iowa.