

**Page County, Iowa**  
 Iowa South Zone (1402)  
 Horiz. Datum: **NAD83(NA2011)**  
 Vert. Datum: NAVD 1988  
 US Survey Feet  
**2013**

Point Name: 7

**Designation:** 2008-007 Page Co GPS Control Pt (Set by DCI in 2008)

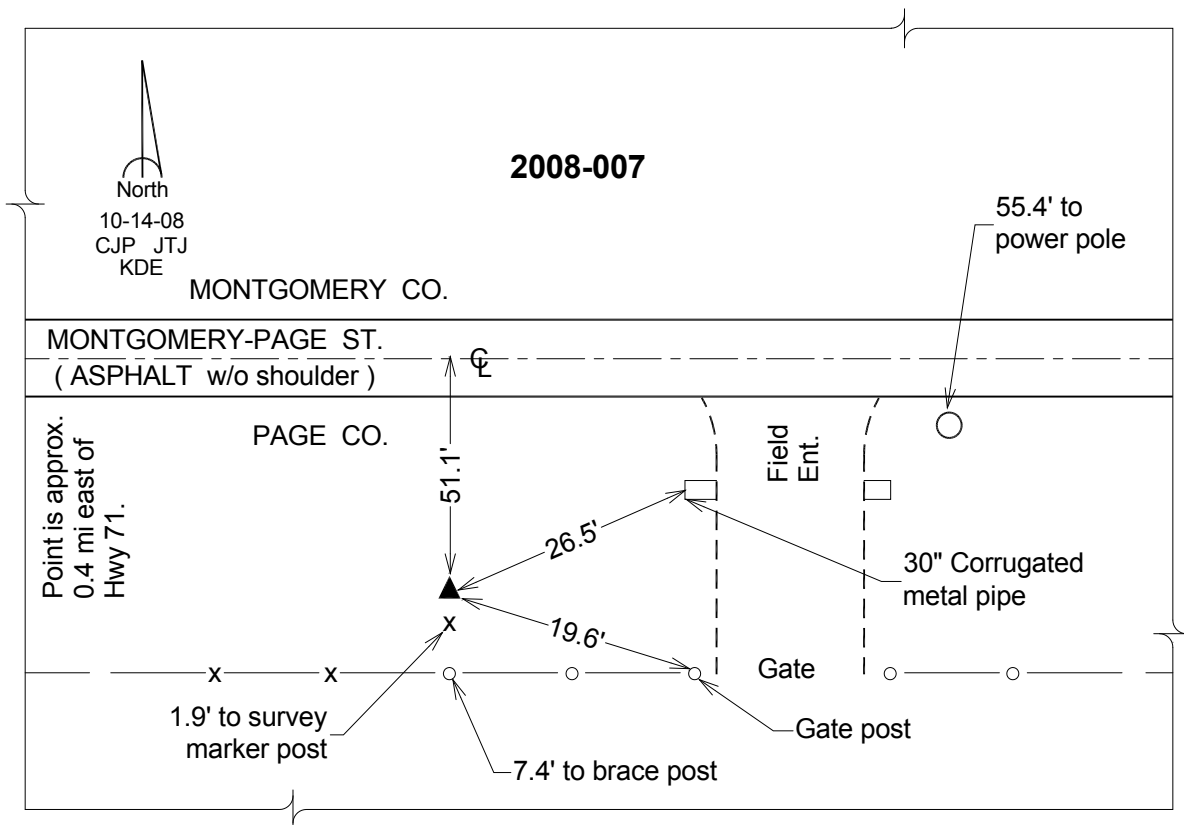
Northing: **331616.48sft** Easting: **1231431.15sft**

Orthometric Height: **1035.74sft** Ellipsoid Height: **934.97sft** **Geoid12A**

Latitude: **N40°54'02.37737"** Longitude: **W94°58'46.41656"**

Mapping Angle: **-0°58'29"** Combination Scale Factor: **0.999917411**

**Monument Type:** Berntsen 3/4" Top Security Rod Monument with a 2-1/2" dia. domed survey cap and permanent magnet encased in a white PVC pipe with a NGS style alum. access cover.



*This document was prepared by DCI on 04-16-2013 for use by Page County, Iowa.*