

Page County, Iowa
Iowa South Zone (1402)
Horiz. Datum: **NAD83(NA2011)**
Vert. Datum: NAVD 1988
US Survey Feet
2013

Point Name: **10**

Designation: 2008-010 Page Co GPS Control Pt (Set by DCI in 2008)

Northing: **315780.80**sft Easting: **1229931.87**sft

Orthometric Height: **1029.17**sft Ellipsoid Height: **928.05**sft **Geoid12A**

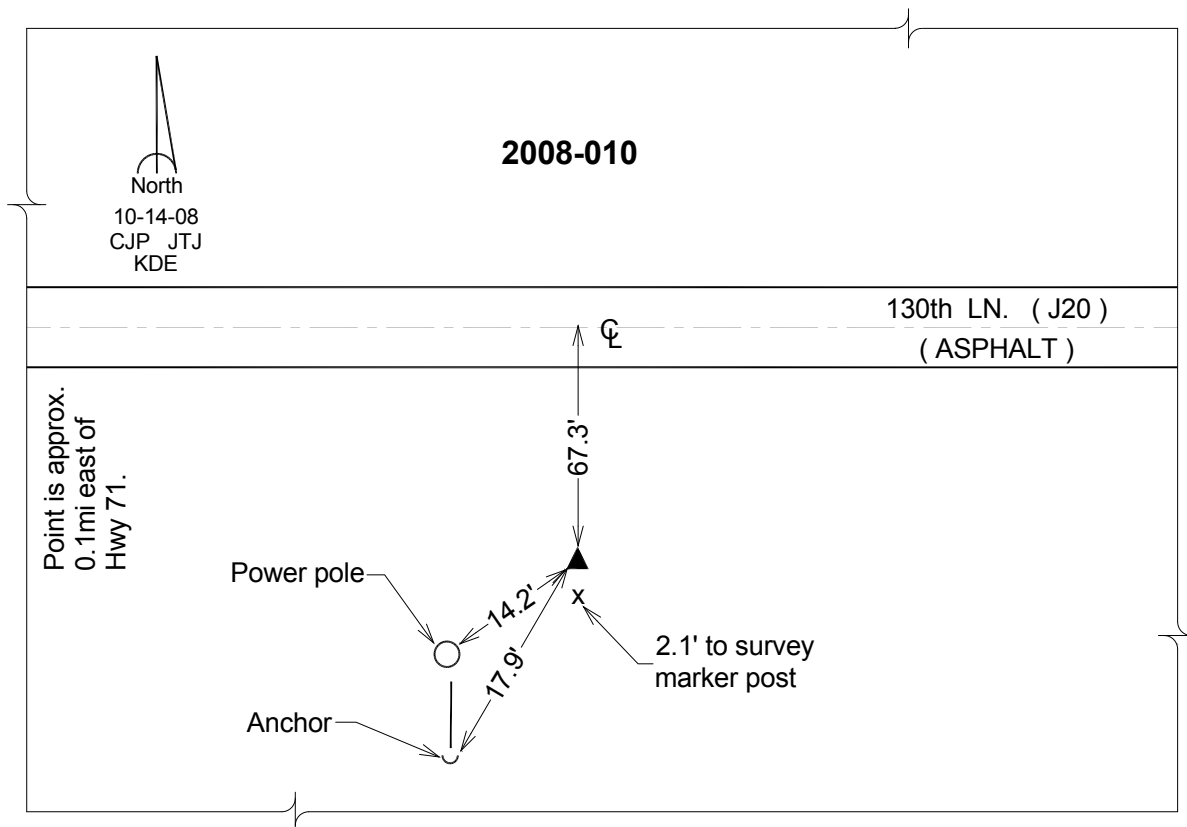
Latitude: **N40°51'25.67233"**

Longitude: **W94°59'02.42044"**

Mapping Angle: **-0°58'39"**

Combination Scale Factor: **0.999921983**

Monument Type: Berntsen 3/4" Top Security Rod Monument with a 2-1/2" dia. domed survey cap and permanent magnet encased in a white PVC pipe with a NGS style alum. access cover.



This document was prepared by DCI on 04-16-2013 for use by Page County, Iowa.