

**Page County, Iowa**  
Iowa South Zone (1402)  
Horiz. Datum: **NAD83(NA2011)**  
Vert. Datum: NAVD 1988  
US Survey Feet  
**2013**

Point Name: **11**

**Designation:** 2008-011 Page Co GPS Control Pt (Set by DCI in 2008)

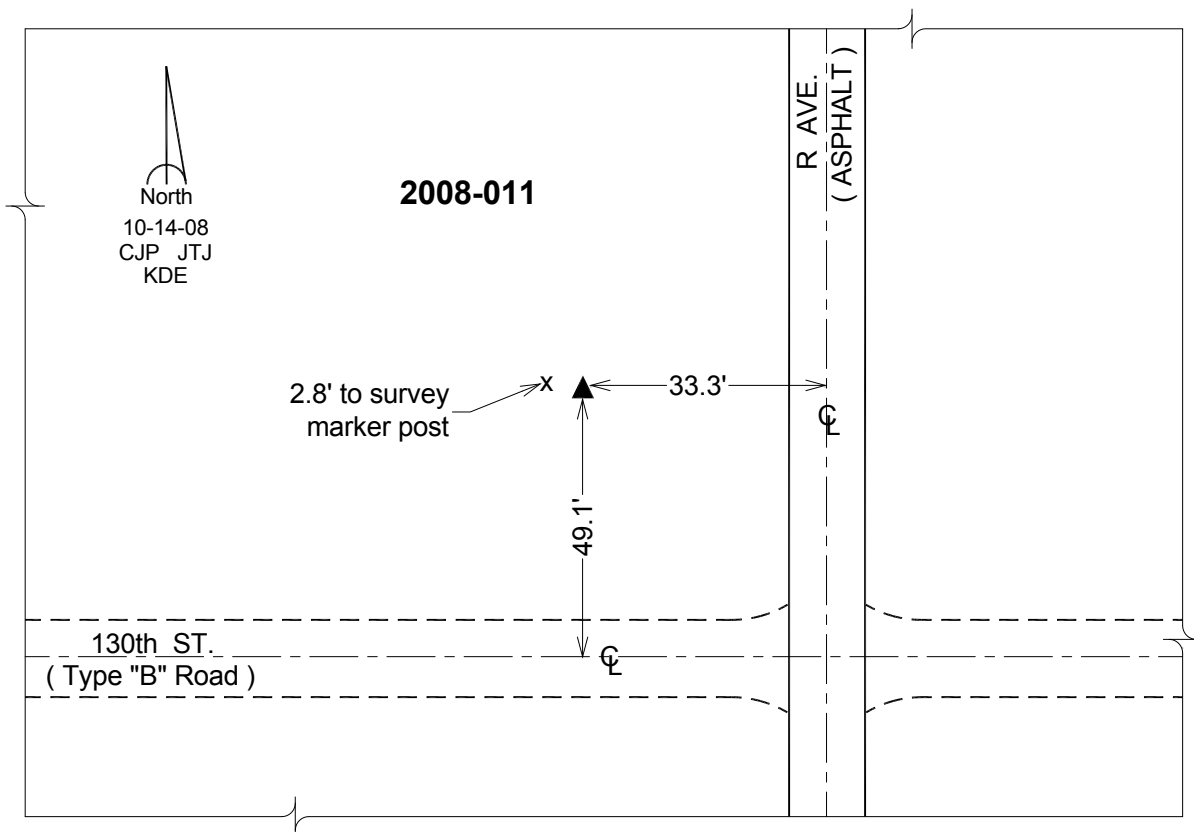
Northing: **316163.84sft** Easting: **1213761.15sft**

Orthometric Height: **1186.90sft** Ellipsoid Height: **1085.99sft** **Geoid12A**

Latitude: **N40°51'26.67696"** Longitude: **W95°02'32.92598"**

Mapping Angle: **-1°00'58"** Combination Scale Factor: **0.999914418**

**Monument Type:** Berntsen 3/4" Top Security Rod Monument with a 2-1/2" dia. domed survey cap and permanent magnet encased in a white PVC pipe with a NGS style alum. access cover.



*This document was prepared by DCI on 04-16-2013 for use by Page County, Iowa.*