

Page County, Iowa
Iowa South Zone (1402)
Horiz. Datum: **NAD83(NA2011)**
Vert. Datum: NAVD 1988
US Survey Feet
2013

Point Name: **13**

Designation: 2008-013 Page Co GPS Control Pt (Set by DCI in 2008)

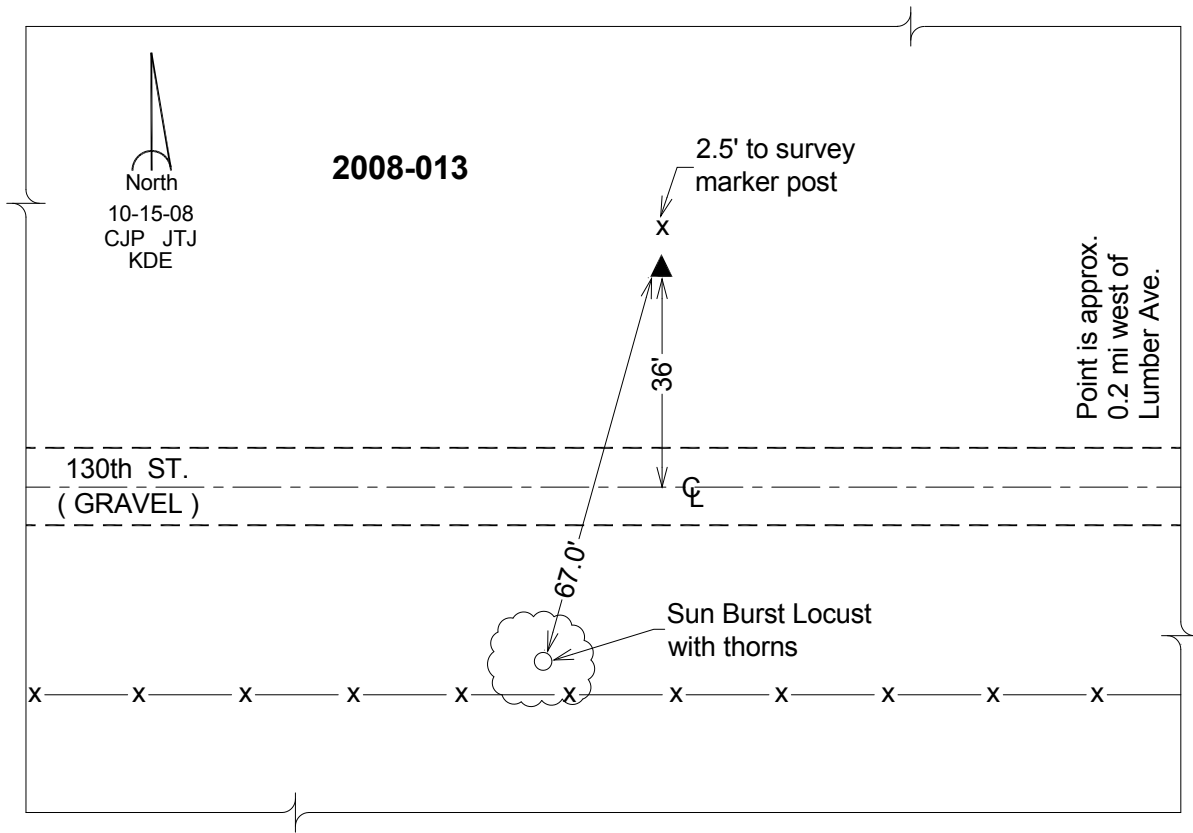
Northing: **316777.20sft** Easting: **1183910.99sft**

Orthometric Height: **1126.30sft** Ellipsoid Height: **1025.83sft** **Geoid12A**

Latitude: **N40°51'27.32356"** Longitude: **W95°09'01.48733"**

Mapping Angle: **-1°05'14"** Combination Scale Factor: **0.999917270**

Monument Type: Berntsen 3/4" Top Security Rod Monument with a 2-1/2" dia. domed survey cap and permanent magnet encased in a white PVC pipe with a NGS style alum. access cover.



This document was prepared by DCI on 04-16-2013 for use by Page County, Iowa.