

Page County, Iowa
Iowa South Zone (1402)
Horiz. Datum: **NAD83(NA2011)**
Vert. Datum: NAVD 1988
US Survey Feet
2013

Point Name: **14**

Designation: 2008-014 Page Co GPS Control Pt (Set by DCI in 2008)

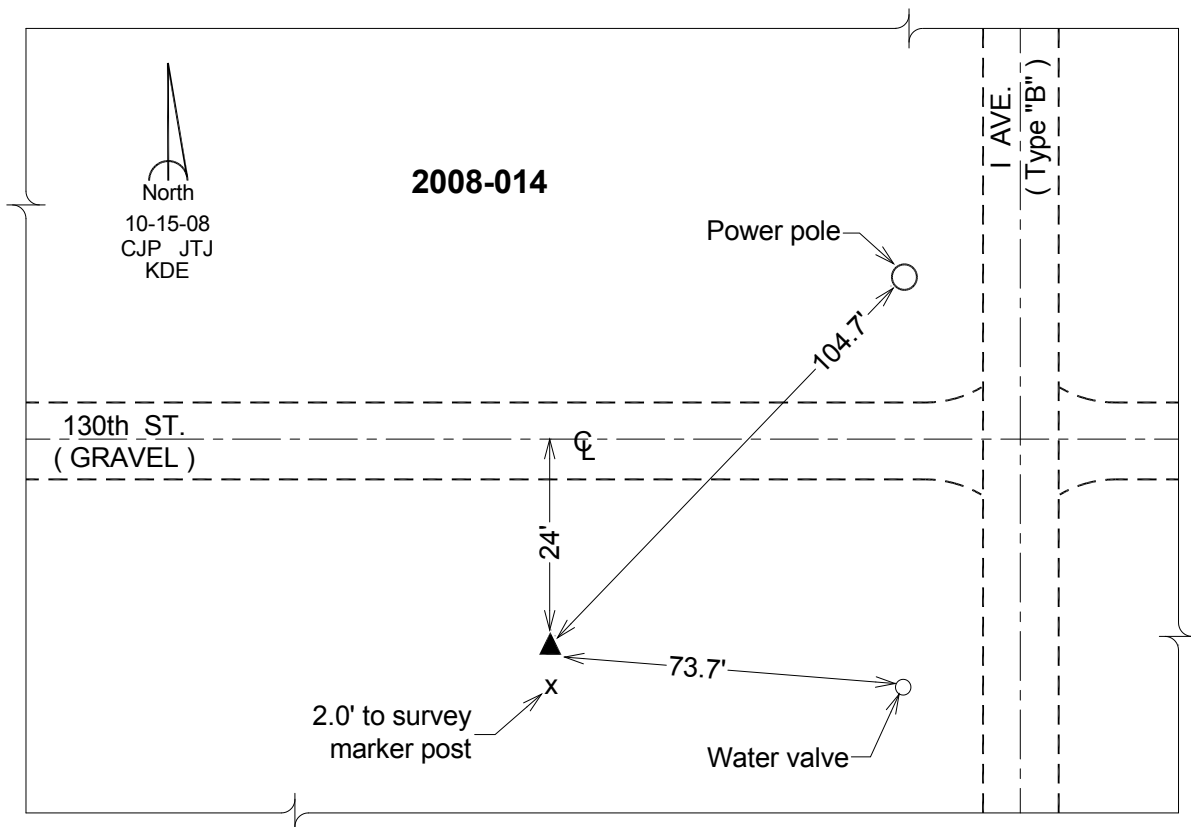
Northing: **317146.22sft** Easting: **1166324.08sft**

Orthometric Height: **1168.06sft** Ellipsoid Height: **1067.94sft** **Geoid12A**

Latitude: **N40°51'27.60860"** Longitude: **W95°12'50.41998"**

Mapping Angle: **-1°07'44"** Combination Scale Factor: **0.999915253**

Monument Type: Berntsen 3/4" Top Security Rod Monument with a 2-1/2" dia. domed survey cap and permanent magnet encased in a white PVC pipe with a NGS style alum. access cover.



This document was prepared by DCI on 04-16-2013 for use by Page County, Iowa.