

Page County, Iowa
Iowa South Zone (1402)
Horiz. Datum: **NAD83(NA2011)**
Vert. Datum: NAVD 1988
US Survey Feet
2013

Point Name: **15**

Designation: 2008-015 Page Co GPS Control Pt (Set by DCI in 2008)

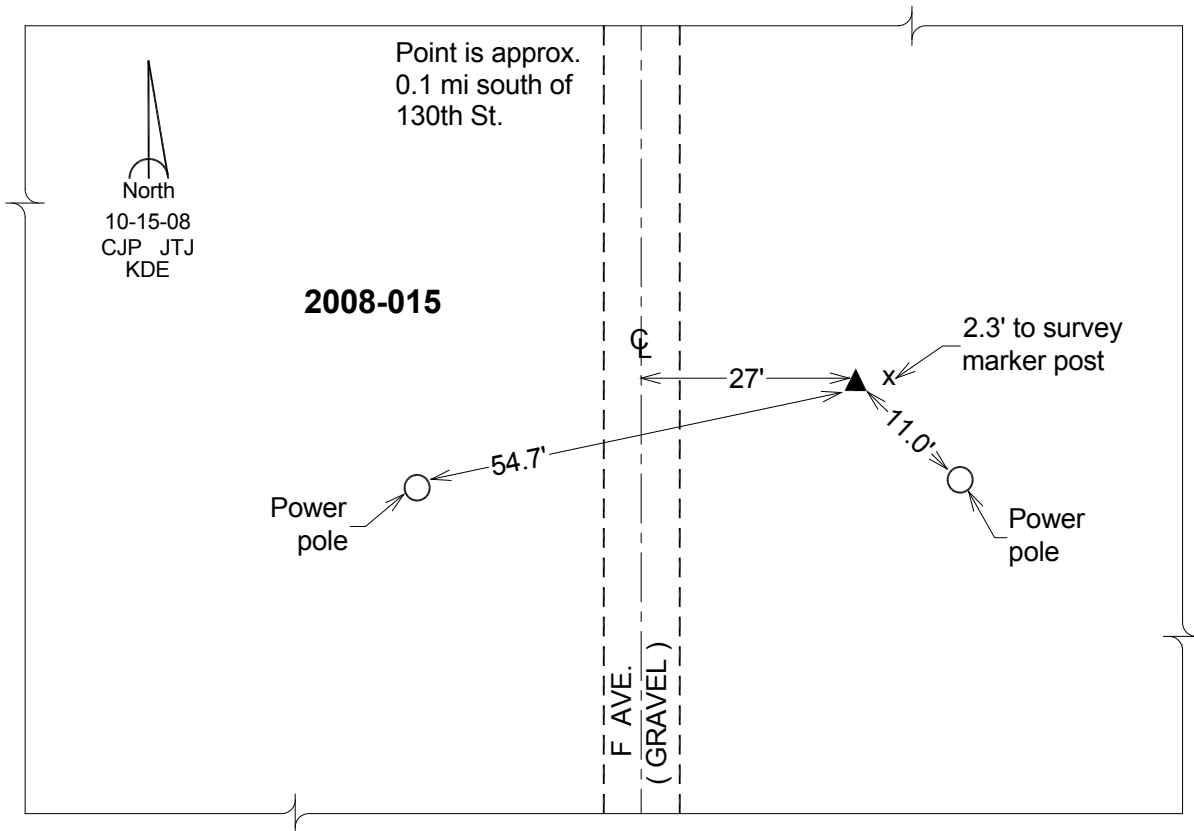
Northing: **316795.82**sft Easting: **1150749.01**sft

Orthometric Height: **1098.10**sft Ellipsoid Height: **998.29**sft **Geoid12A**

Latitude: **N40°51'21.06469"** Longitude: **W95°16'12.98518"**

Mapping Angle: **-1°09'58"** Combination Scale Factor: **0.999918765**

Monument Type: Berntsen 3/4" Top Security Rod Monument with a 2-1/2" dia. domed survey cap and permanent magnet encased in a white PVC pipe with a NGS style alum. access cover.



This document was prepared by DCI on 04-16-2013 for use by Page County, Iowa.