

**Page County, Iowa**  
Iowa South Zone (1402)  
Horiz. Datum: **NAD83(NA2011)**  
Vert. Datum: NAVD 1988  
US Survey Feet  
**2013**

Point Name: **16**

**Designation:** 2008-016 Page Co GPS Control Pt (Set by DCI in 2008)

Northing: **318069.15sft**    Easting: **1133708.86sft**

Orthometric Height: **1085.36sft**    Ellipsoid Height: **986.04sft**    **Geoid12A**

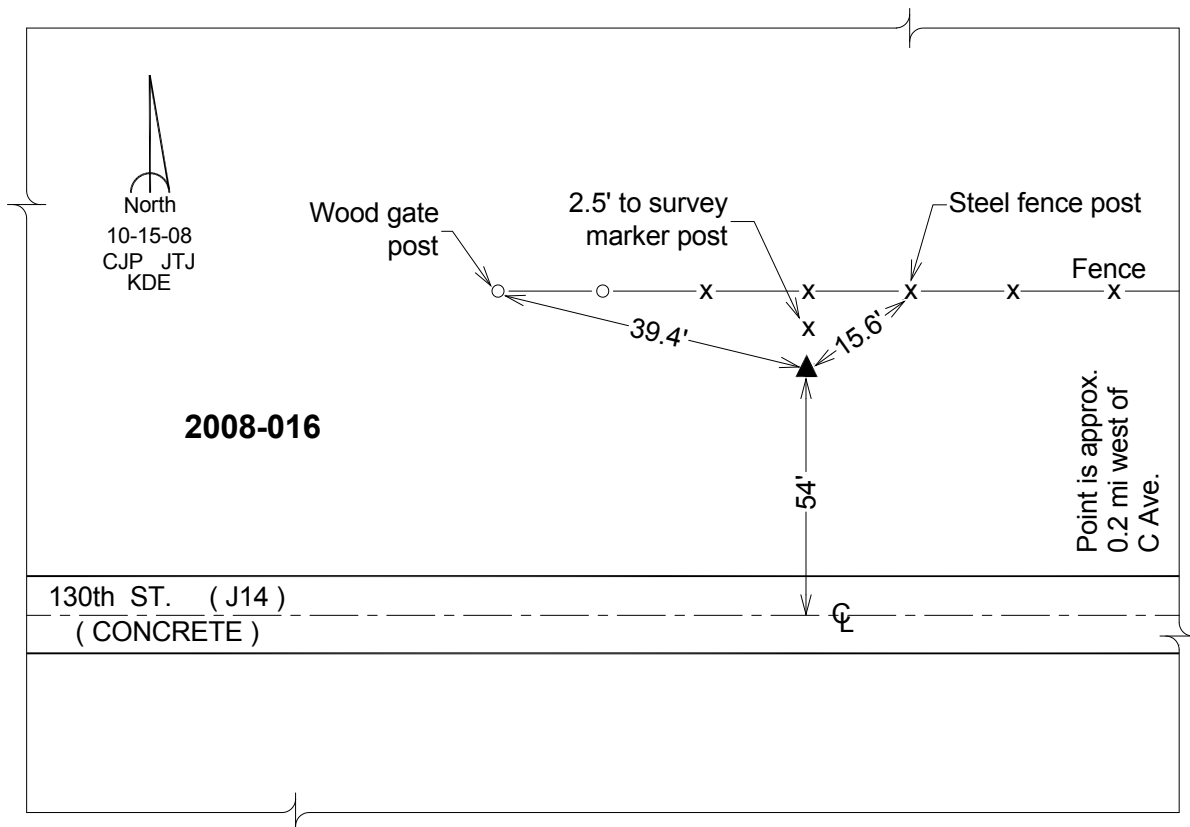
Latitude: **N40°51'30.15779"**

Longitude: **W95°19'55.04575"**

Mapping Angle: **-1°12'24"**

Combination Scale Factor: **0.999919087**

**Monument Type:** Berntsen 3/4" Top Security Rod Monument with a 2-1/2" dia. domed survey cap and permanent magnet encased in a white PVC pipe with a NGS style alum. access cover.



*This document was prepared by DCI on 04-16-2013 for use by Page County, Iowa.*