

**Page County, Iowa**  
 Iowa South Zone (1402)  
 Horiz. Datum: **NAD83(NA2011)**  
 Vert. Datum: NAVD 1988  
 US Survey Feet  
**2013**

Point Name: **17**

**Designation:** 2008-017 Page Co GPS Control Pt (Set by DCI in 2008)

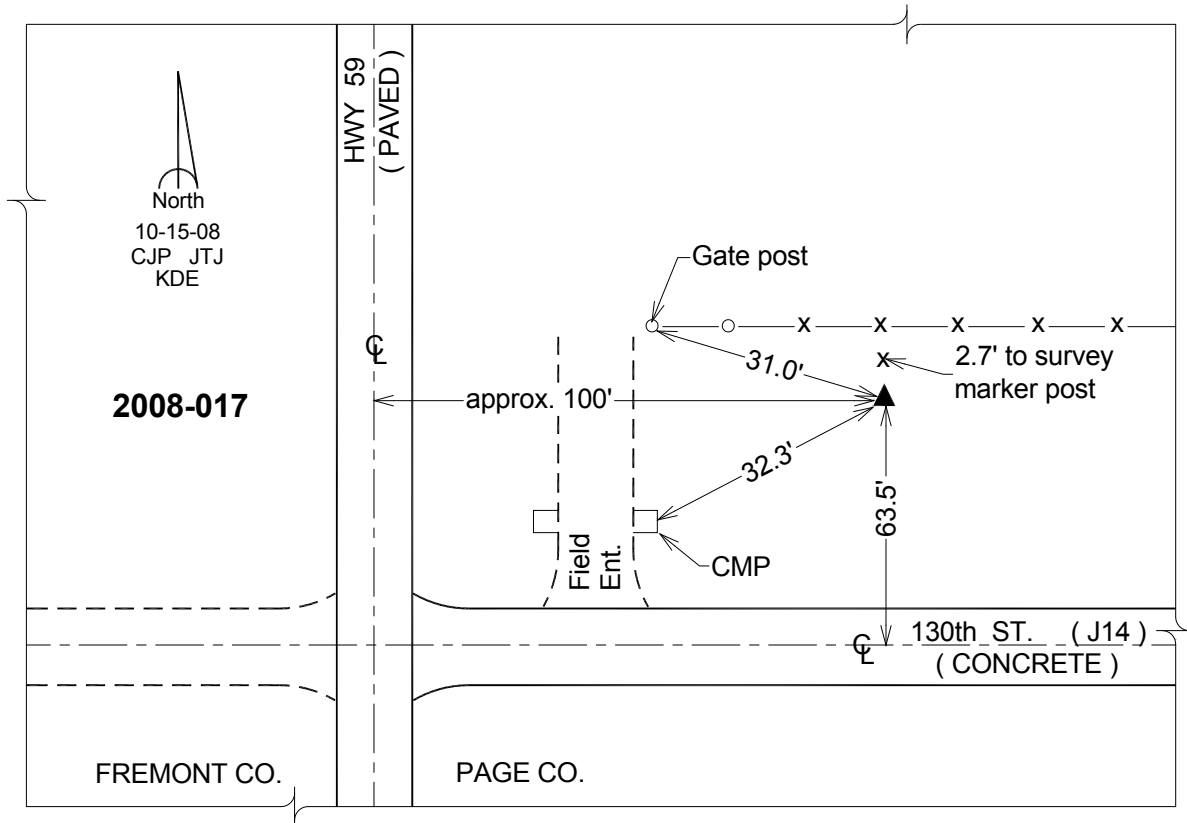
Northing: **318340.03sft**    Easting: **1119275.91sft**

Orthometric Height: **1116.57sft**    Ellipsoid Height: **1017.72sft**                      **Geoid12A**

Latitude: **N40°51'29.78767"**                      Longitude: **W95°23'02.91600"**

Mapping Angle: **-1°14'28"**                      Combination Scale Factor: **0.999917586**

**Monument Type:** Berntsen 3/4" Top Security Rod Monument with a 2-1/2" dia. domed survey cap and permanent magnet encased in a white PVC pipe with a NGS style alum. access cover.



*This document was prepared by DCI on 04-16-2013 for use by Page County, Iowa.*