

Page County, Iowa
 Iowa South Zone (1402)
 Horiz. Datum: **NAD83(NA2011)**
 Vert. Datum: NAVD 1988
 US Survey Feet
2013

Point Name: **18**

Designation: 2008-018 Page Co GPS Control Pt (Set by DCI in 2008)

Northing: **302486.65sft** Easting: **1118960.82sft**

Orthometric Height: **1094.71sft** Ellipsoid Height: **995.26sft** **Geoid12A**

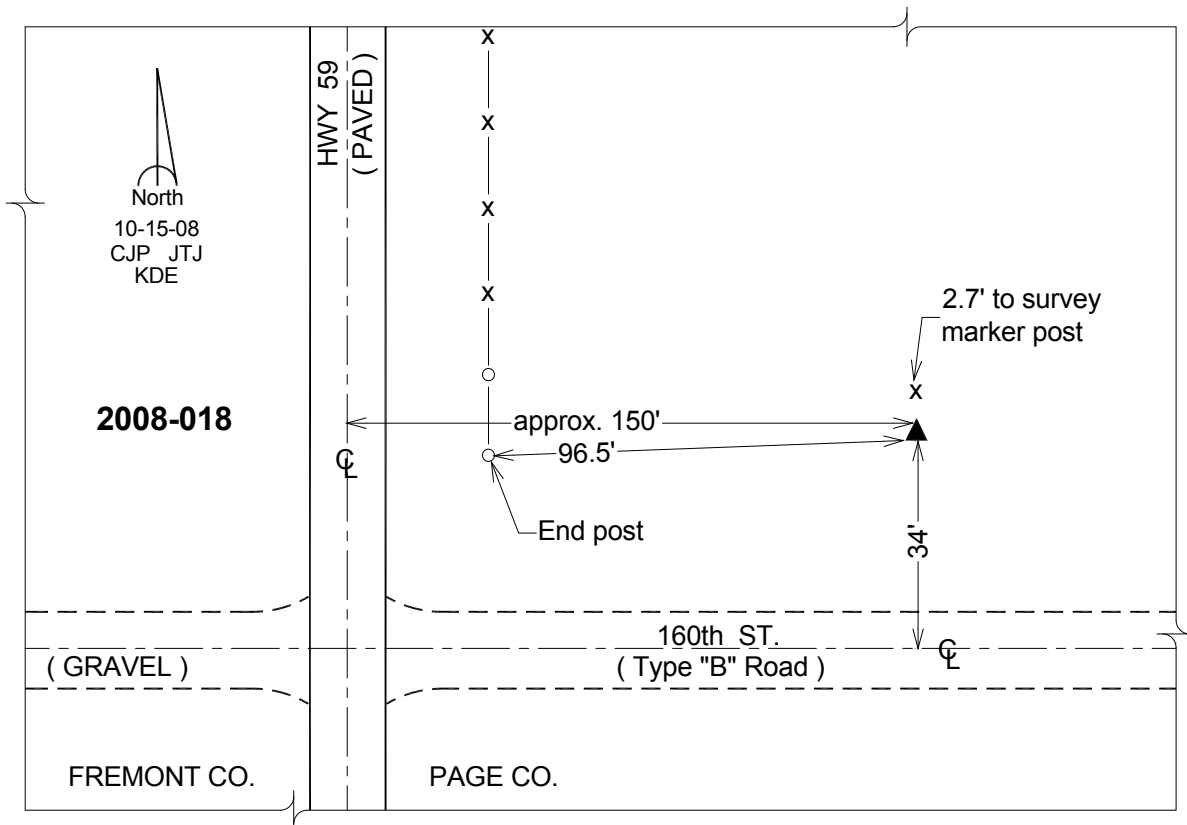
Latitude: **N40°48'53.10624"**

Longitude: **W95°23'02.54722"**

Mapping Angle: **-1°14'28"**

Combination Scale Factor: **0.999923456**

Monument Type: Berntsen 3/4" Top Security Rod Monument with a 2-1/2" dia. domed survey cap and permanent magnet encased in a white PVC pipe with a NGS style alum. access cover.



This document was prepared by DCI on 04-16-2013 for use by Page County, Iowa.