

**Page County, Iowa**  
Iowa South Zone (1402)  
Horiz. Datum: **NAD83(NA2011)**  
Vert. Datum: NAVD 1988  
US Survey Feet  
**2013**

Point Name: **26**

**Designation:** 2008-026 Page Co GPS Control Pt (Set by DCI in 2008)

Northing: **298836.38sft** Easting: **1244998.44sft**

Orthometric Height: **1049.25sft** Ellipsoid Height: **947.73sft** **Geoid12A**

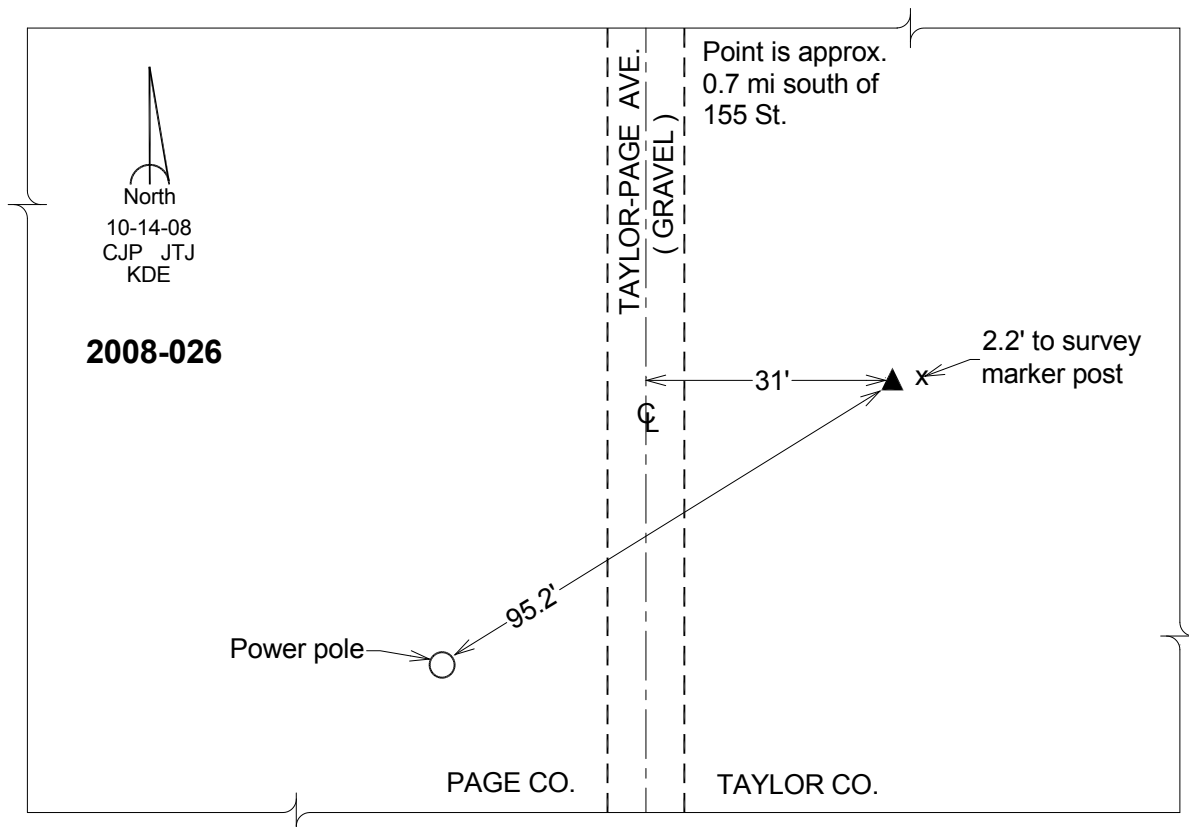
Latitude: **N40°48'40.75666"**

Longitude: **W94°55'42.74501"**

Mapping Angle: **-0°56'28"**

Combination Scale Factor: **0.999926126**

**Monument Type:** Berntsen 3/4" Top Security Rod Monument with a 2-1/2" dia. domed survey cap and permanent magnet encased in a white PVC pipe with a NGS style alum. access cover.



*This document was prepared by DCI on 04-16-2013 for use by Page County, Iowa.*