

**Page County, Iowa**  
Iowa South Zone (1402)  
Horiz. Datum: **NAD83(NA2011)**  
Vert. Datum: NAVD 1988  
US Survey Feet  
**2013**

Point Name: **28**

**Designation:** 2008-028 Page Co GPS Control Pt (Set by DCI in 2008)

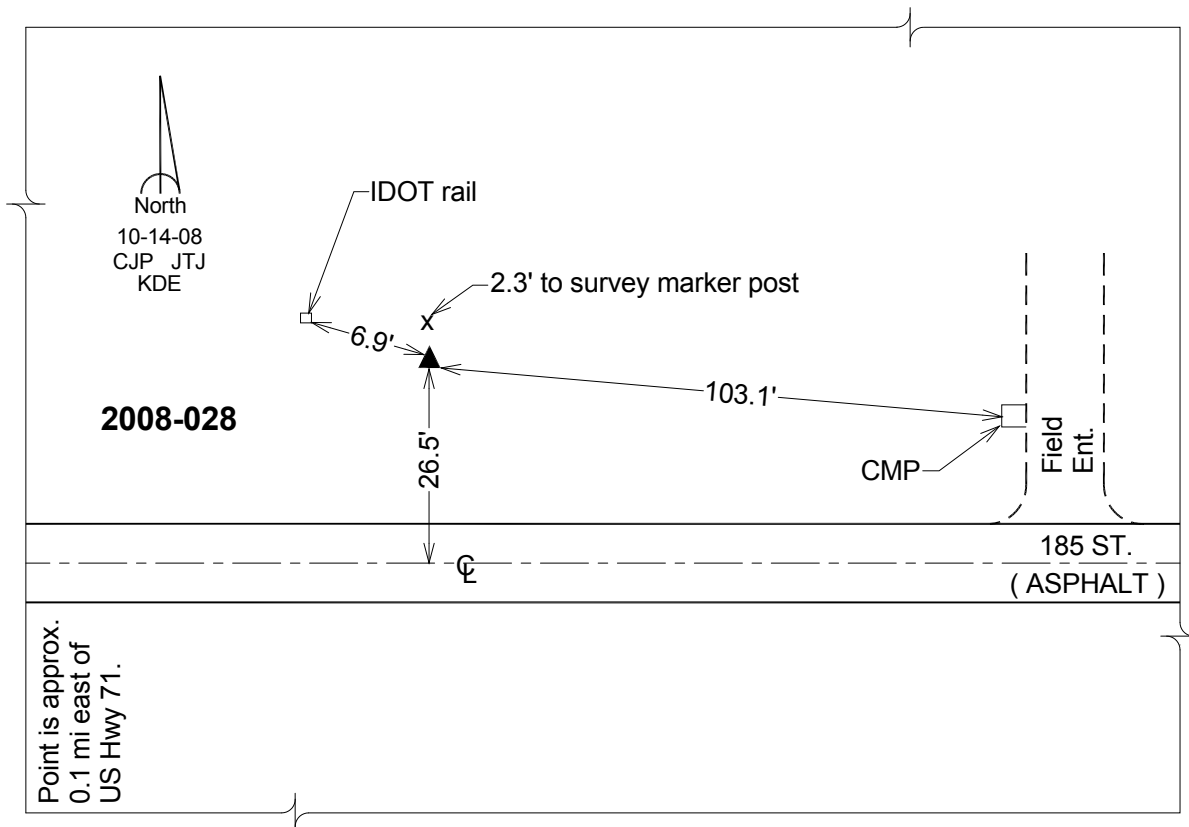
Northing: **284484.50sft**    Easting: **1228170.35sft**

Orthometric Height: **992.51sft**    Ellipsoid Height: **890.89sft**    **Geoid12A**

Latitude: **N40°46'16.17408"**    Longitude: **W94°59'18.37277"**

Mapping Angle: **-0°58'50"**    Combination Scale Factor: **0.999933815**

**Monument Type:** Berntsen 3/4" Top Security Rod Monument with a 2-1/2" dia. domed survey cap and permanent magnet encased in a white PVC pipe with a NGS style alum. access cover.



*This document was prepared by DCI on 04-16-2013 for use by Page County, Iowa.*