

Page County, Iowa
 Iowa South Zone (1402)
 Horiz. Datum: **NAD83(NA2011)**
 Vert. Datum: NAVD 1988
 US Survey Feet
2013

Point Name: **29**

Designation: 2008-029 Page Co GPS Control Pt (Set by DCI in 2008)

Northing: **286134.27**sft Easting: **1215886.50**sft

Orthometric Height: **1059.72**sft Ellipsoid Height: **958.23**sft **Geoid12A**

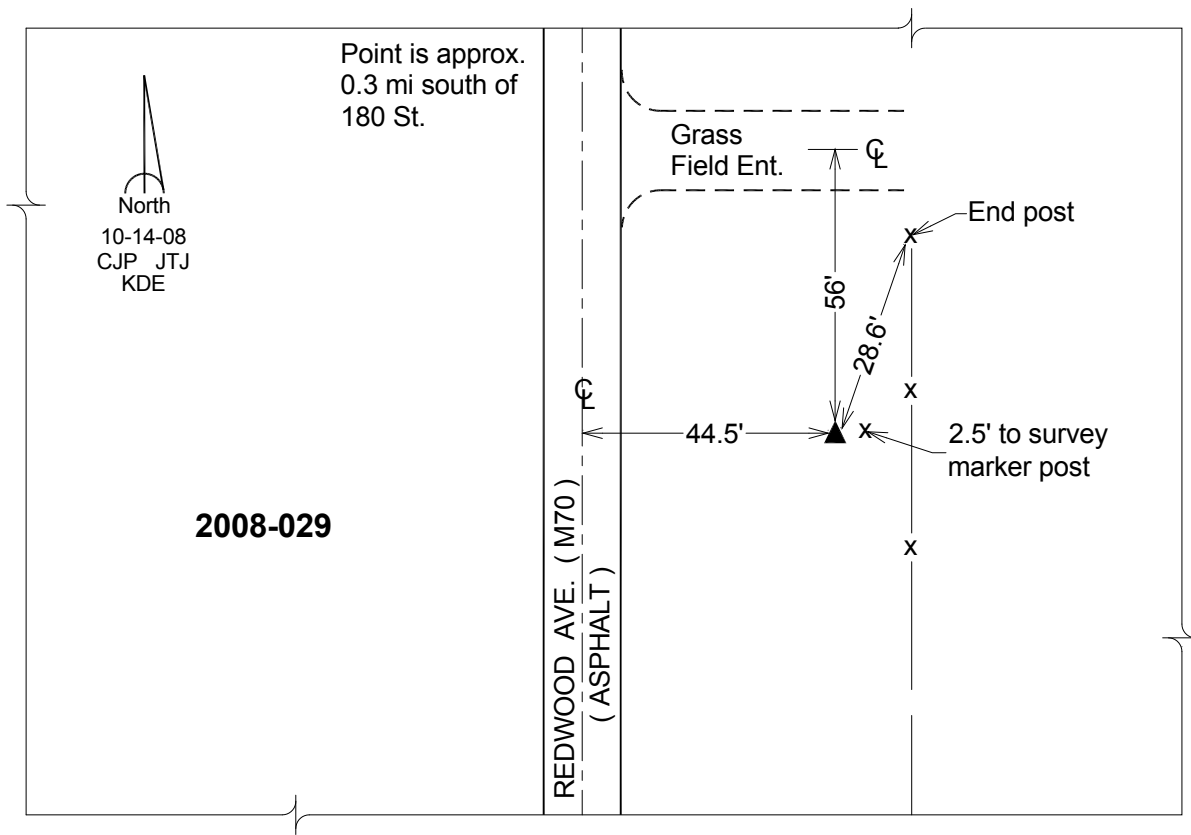
Latitude: **N40°46'30.36552"**

Longitude: **W95°01'58.38334"**

Mapping Angle: **-1°00'35"**

Combination Scale Factor: **0.999930092**

Monument Type: Berntsen 3/4" Top Security Rod Monument with a 2-1/2" dia. domed survey cap and permanent magnet encased in a white PVC pipe with a NGS style alum. access cover.



This document was prepared by DCI on 04-16-2013 for use by Page County, Iowa.