

**Page County, Iowa**  
Iowa South Zone (1402)  
Horiz. Datum: **NAD83(NA2011)**  
Vert. Datum: NAVD 1988  
US Survey Feet  
**2013**

Point Name: **30**

**Designation:** 2008-030 Page Co GPS Control Pt (Set by DCI in 2008)

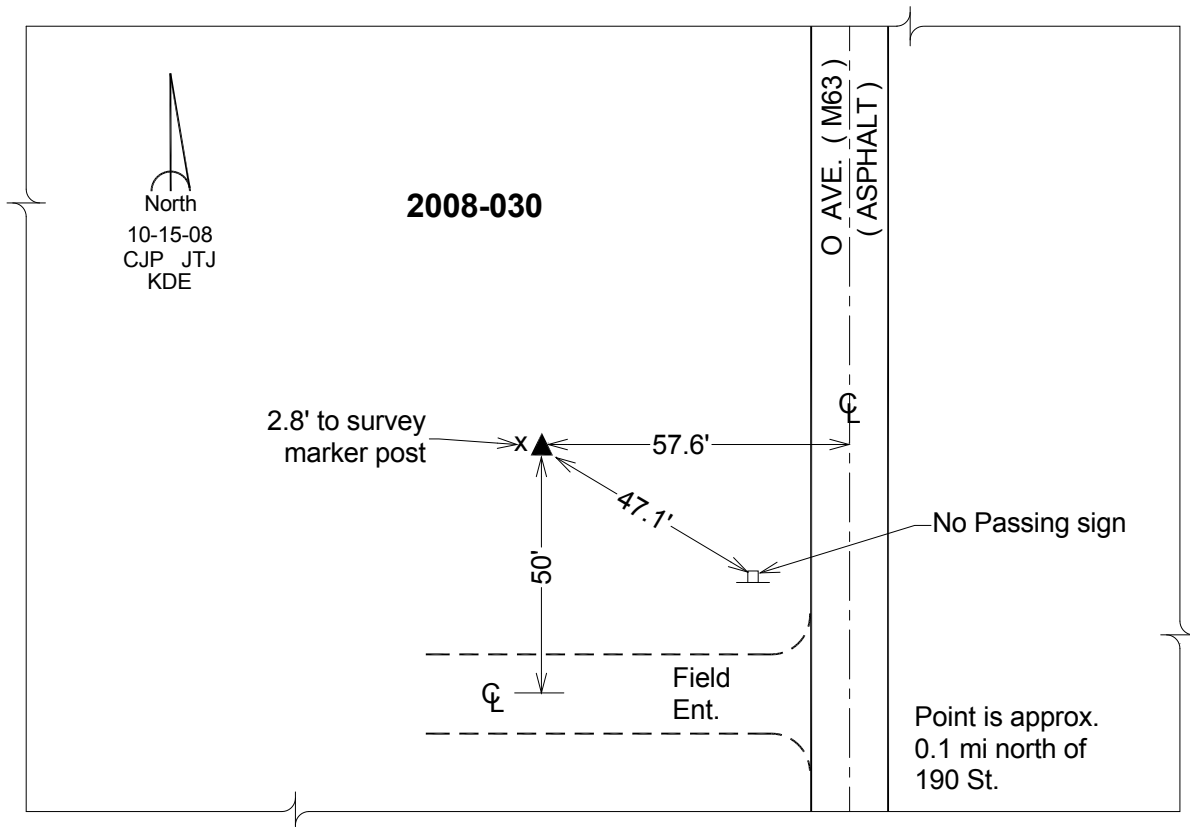
Northing: **285667.02sft**    Easting: **1197415.43sft**

Orthometric Height: **1099.65sft**    Ellipsoid Height: **998.34sft**    **Geoid12A**

Latitude: **N40°46'22.46299"**    Longitude: **W95°05'58.32047"**

Mapping Angle: **-1°03'13"**    Combination Scale Factor: **0.999928461**

**Monument Type:** Berntsen 3/4" Top Security Rod Monument with a 2-1/2" dia. domed survey cap and permanent magnet encased in a white PVC pipe with a NGS style alum. access cover.



*This document was prepared by DCI on 04-16-2013 for use by Page County, Iowa.*