

Page County, Iowa
Iowa South Zone (1402)
Horiz. Datum: **NAD83(NA2011)**
Vert. Datum: NAVD 1988
US Survey Feet
2013

Point Name: **33**

Designation: 2008-033 Page Co GPS Control Pt (Set by DCI in 2008)

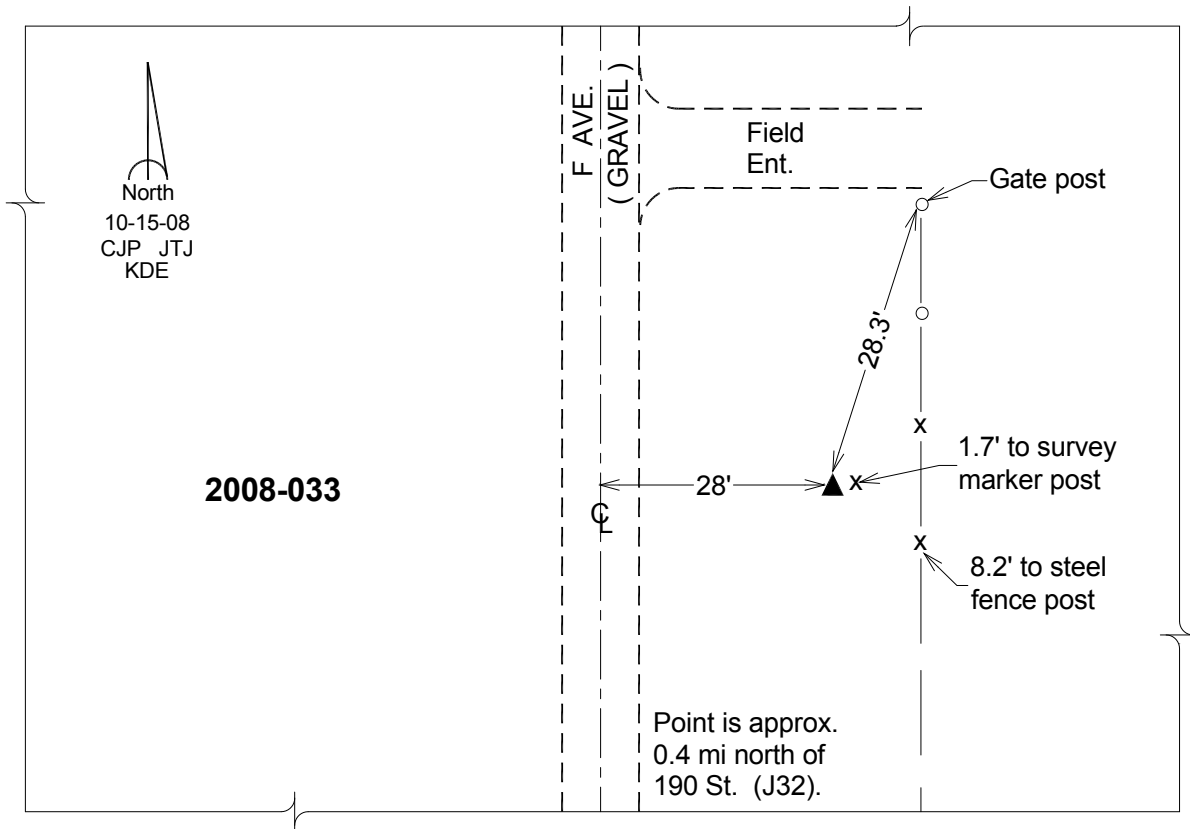
Northing: **287843.69sft** Easting: **1150060.32sft**

Orthometric Height: **1147.58sft** Ellipsoid Height: **1047.03sft** **Geoid12A**

Latitude: **N40°46'34.90280"** Longitude: **W95°16'14.27654"**

Mapping Angle: **-1°09'59"** Combination Scale Factor: **0.999925692**

Monument Type: Berntsen 3/4" Top Security Rod Monument with a 2-1/2" dia. domed survey cap and permanent magnet encased in a white PVC pipe with a NGS style alum. access cover.



This document was prepared by DCI on 04-16-2013 for use by Page County, Iowa.