

**Page County, Iowa**  
Iowa South Zone (1402)  
Horiz. Datum: **NAD83(NA2011)**  
Vert. Datum: NAVD 1988  
US Survey Feet  
**2013**

Point Name: **34**

**Designation:** 2008-034 Page Co GPS Control Pt (Set by DCI in 2008)

Northing: **285677.25**sft    Easting: **1134096.01**sft

Orthometric Height: **1095.98**sft    Ellipsoid Height: **995.71**sft    **Geoid12A**

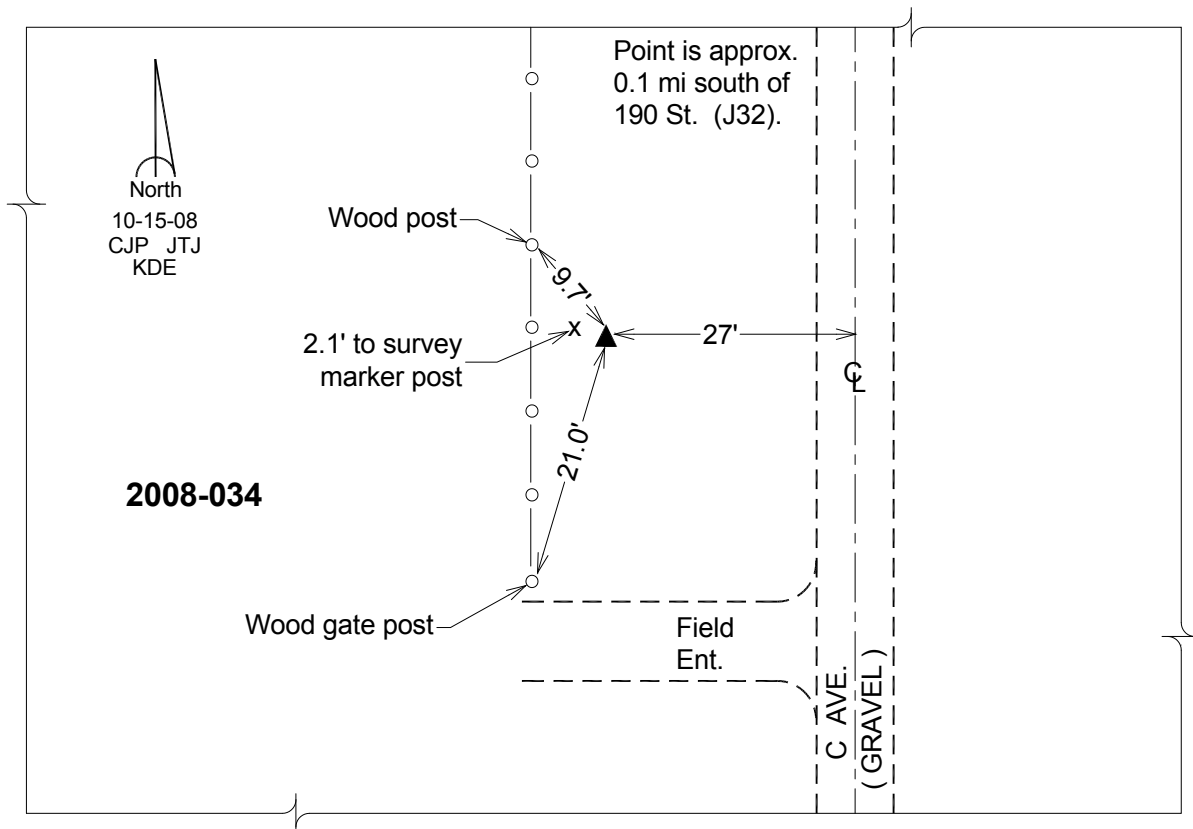
Latitude: **N40°46'10.23730"**

Longitude: **W95°19'41.14912"**

Mapping Angle: **-1°12'15"**

Combination Scale Factor: **0.999929028**

**Monument Type:** Berntsen 3/4" Top Security Rod Monument with a 2-1/2" dia. domed survey cap and permanent magnet encased in a white PVC pipe with a NGS style alum. access cover.



*This document was prepared by DCI on 04-16-2013 for use by Page County, Iowa.*